

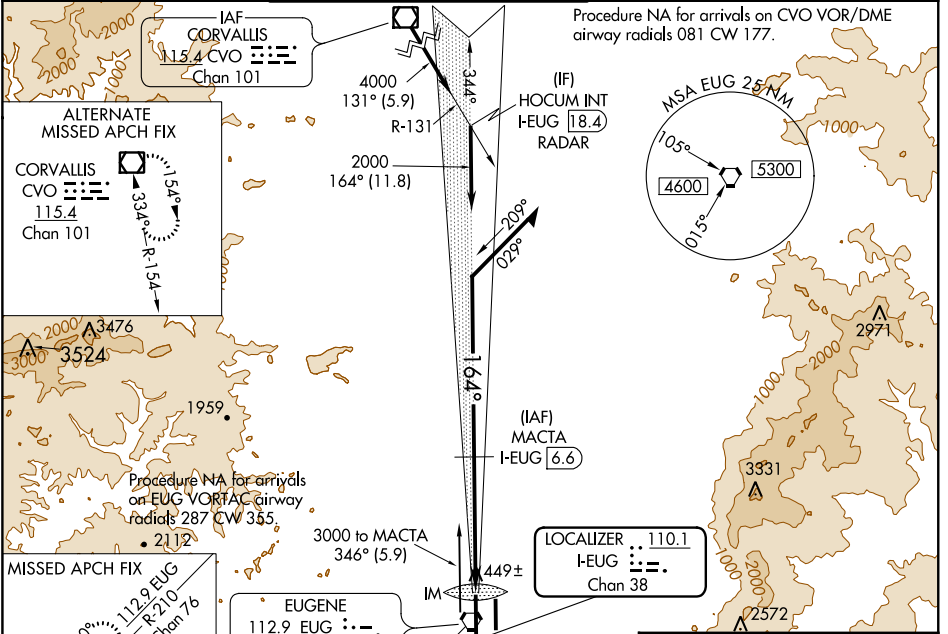
| | | |
|--|------------------------|---|
| LOC/DME I-EUG 110.1 Chan 38 | APP CRS 164° | Rwy ldg 8009 TDZE 364 Apt Elev 374 |
|--|------------------------|---|

ILS RWY 16R (CAT II & III)

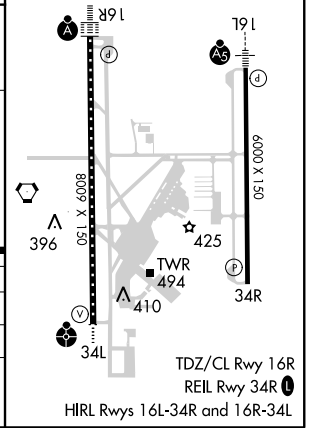
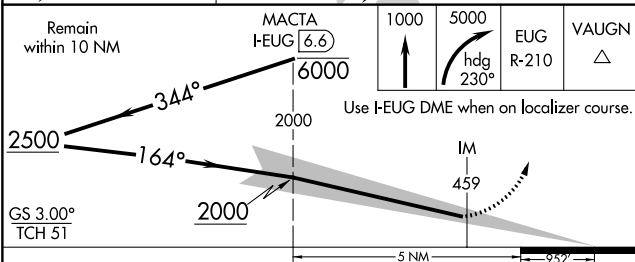
MAHLON SWEET FIELD (EUG)

| | | | |
|--|--|--------|---|
| DME required. | | ALSF-2 | MISSED APPROACH: Climb to 1000 then climbing right turn to 5000 on heading 230° and on EUG VORTAC R-210 to VAUGN/EUG 14 DME and hold, continue climb-in-hold to 5000. |
| <p>Simultaneous approach authorized. Cat II RVR 1000 authorized with specific OSPEC, MSPEC, or LOA approval and use of autoland or HUD to touchdown. Cat II and III minimums NA when control tower closed.</p> | | | |

| | | | | | |
|------------------------|---|---|-------------------------------|--------------------------------|-------------------------|
| ATIS 125.225 | CASCADE APP CON ★ 119.6 348.7 | EUGENE TOWER ★ 118.9 (CTAF) 371.9 (Rwy 16R/34L) 124.15 371.9 (Rwy 16L/34R) | GND CON 121.7 269.5 | CLNC DEL 121.7 269.5 | UNICOM 122.95 |
|------------------------|---|---|-------------------------------|--------------------------------|-------------------------|



| | |
|----------|----------|
| ELEV 374 | TDZE 364 |
|----------|----------|



| | | | | |
|-----------|-----------------------------|---|---|---|
| CATEGORY | A | B | C | D |
| S-ILS 16R | CAT II RA 108/12 100 DA 464 | | | |
| S-ILS 16R | CAT III RVR 06 | | | |

CATEGORY II & III ILS - SPECIAL AIRCREW & AIRCRAFT CERTIFICATION REQUIRED

MAHLON SWEET FIELD (EUG)
ILS RWY 16R (CAT II & III)

TDZ/CL Rwy 16R
REIL Rwy 34R
HIRL Rwy 16L-34R and 16R-34L