

WAAS CH <b>49016</b> <b>W34A</b>	APP CRS <b>346°</b>	Rwy Idg <b>6108</b> TDZE <b>5012</b> Apt Elev <b>5024</b>
--	------------------------	---

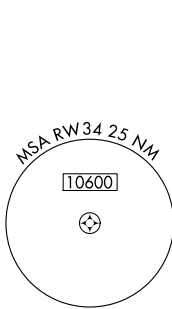
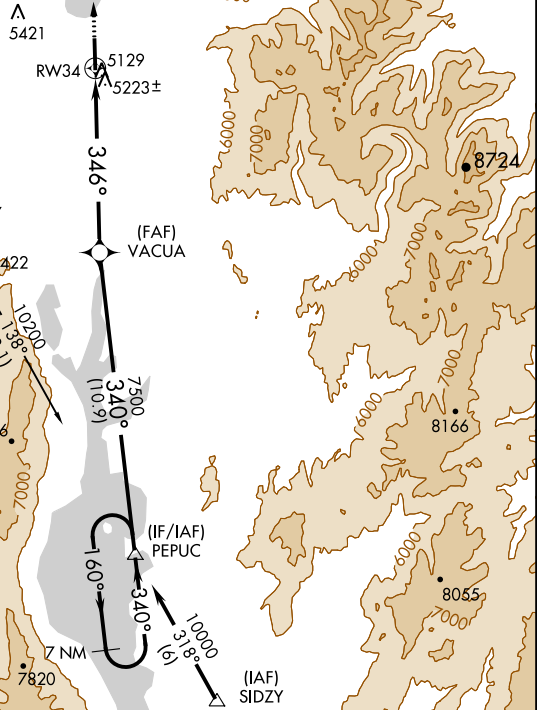
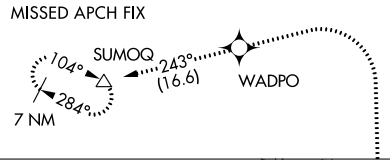
# RNAV (GPS) RWY 34

MC CALL MUNI (MYL)

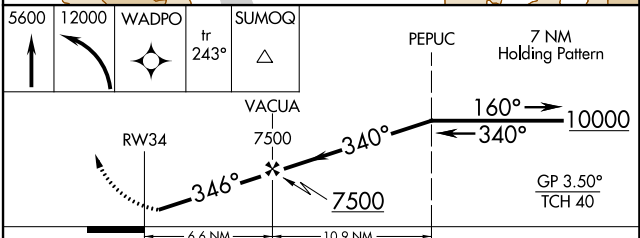
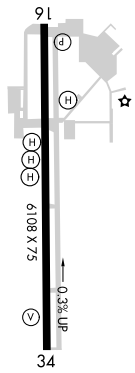
**⚠** For uncompensated Baro-VNAV systems, LNAV/VNAV NA below -23°C (-9°F) or above 5°C (41°F). DME/DME RNP-0.3 NA. Rwy 34 helicopter visibility reduction below 3/4 SM NA. Circling Rwy 16 NA at night.

**⚠** MISSED APPROACH: Climb to 5600 then climbing left turn to 12000 direct WADPO and on track 243° to SUMOQ and hold, continue climb-in-hold to 12000. \* Missed approach requires minimum climb of 260 feet per NM to 6100.

ASOS <b>119.925</b>	SALT LAKE CENTER <b>128.05 306.95</b>	UNICOM <b>122.8 (CTAF)</b>
------------------------	--	-------------------------------



ELEV 5024	TDZE 5012
-----------	-----------



CATEGORY	A	B	C	D
LPV DA		5318-7/8	306 (300-7/8)	
LNAV/VNAV DA		5683-2	671 (700-2)	
LNAV MDA	5680-1	668 (700-1)	5680-17/8	668 (700-17/8)
LNAV MDA*	5520-1	508 (500-1)	5520-13/8	508 (500-13/8)
<b>CIRCLING</b>	5700-1 676 (700-1)	5920-1 1/4 896 (900-1 1/4)	6140-3 1116 (1200-3)	6660-3 1636 (1700-3)

NW-1, 08 NOV 2018 to 06 DEC 2018

NW-1, 08 NOV 2018 to 06 DEC 2018