

VORTAC LFT 109.8 Chan 35	APP CRS 303°	Rwy Idg TDZE Apt Elev	N/A N/A 42
---------------------------------------	------------------------	-----------------------------	---------------------------------------

VOR/DME-A

EUNICE (4R7)

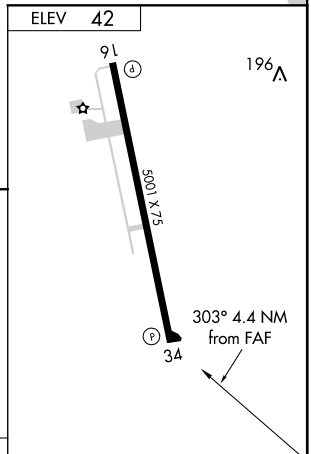
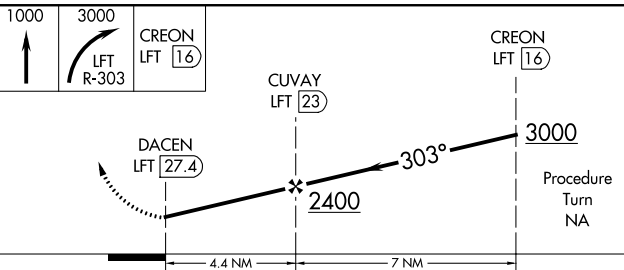
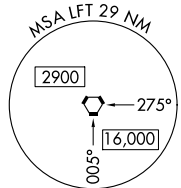
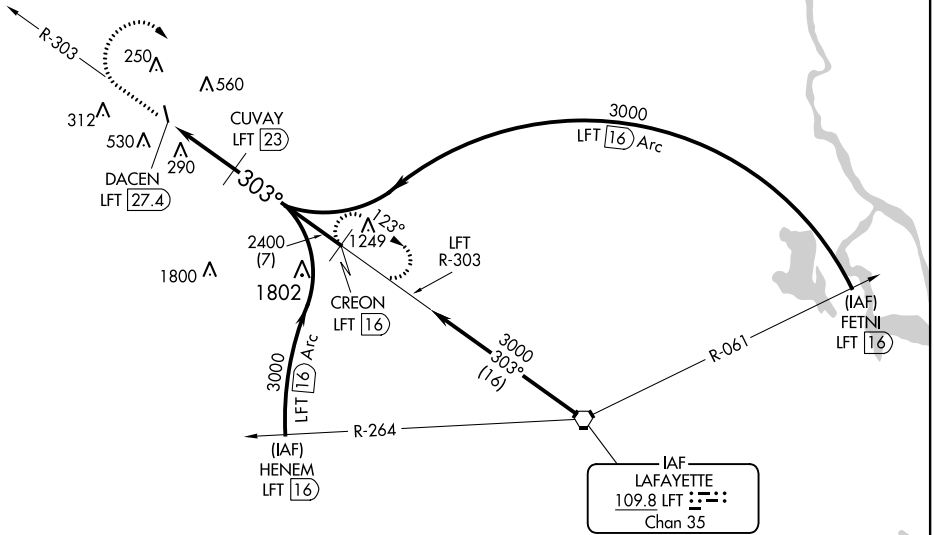
▽ Use Lafayette Rgnl altimeter setting.
▲ NA

MISSED APPROACH: Climb to 1000 then climbing right turn to 3000 via LFT R-303 to CREON/LFT 16 DME and hold.

LAFAYETTE APP CON ★
128.7 268.7

GCO
135.075

UNICOM
122.8 (CTAF) 0



CATEGORY	A	B	C	D
CIRCLING	800-1 758 (800-1)	800-1¼ 758 (800-1¼)	800-2¼ 758 (800-2¼)	NA

REIL Rwy 16 and 34 0
MIRL Rwy 16-34 0

SC-4, 08 NOV 2018 to 06 DEC 2018

SC-4, 08 NOV 2018 to 06 DEC 2018