

WAAS CH 90534 W18A	APP CRS 182°	Rwy Idg TDZE 675 Apt Elev 686	4799 675 686
---------------------------------	------------------------	---	---

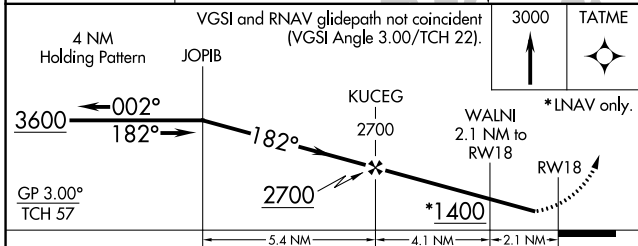
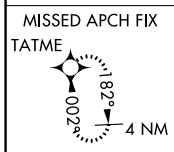
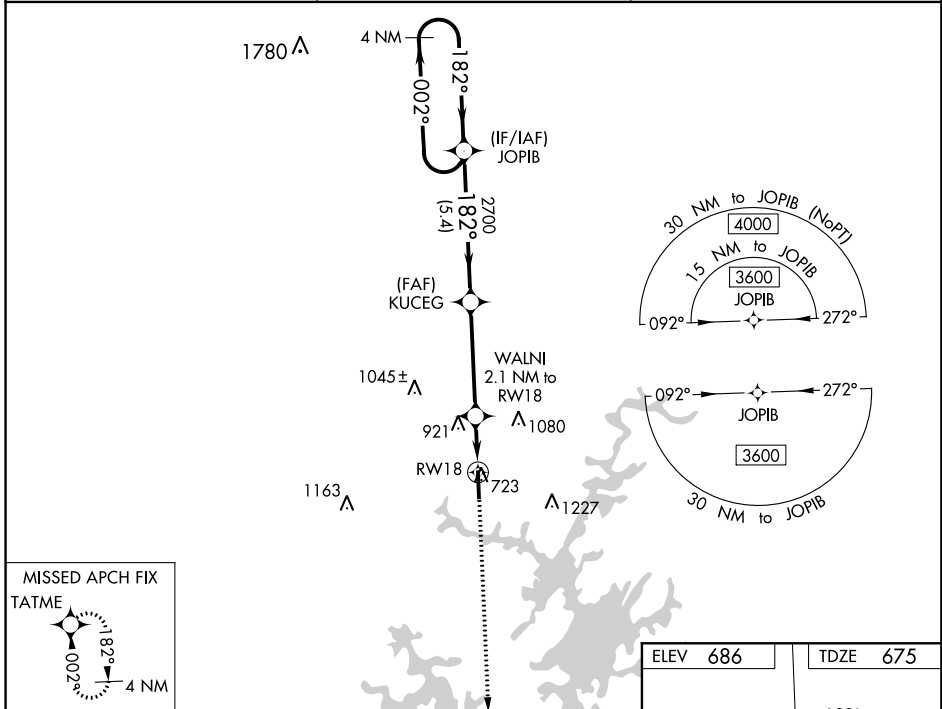
RNAV (GPS) RWY 18

THOMAS C RUSSELL FIELD (ALX)

⚠ For uncompensated Baro-VNAV systems, LNAV/VNAV NA below -16°C (4°F) or above 54°C (130°F). Rwy 18 helicopter visibility reduction below 1 SM NA.
DME/DME RNP-0.3 NA.

MISSED APPROACH: Climb to 3000 direct TATME and hold.

AWOS-3PT 118.325	MONTGOMERY APP CON * 121.2 269.05	UNICOM 122.7 (CTAF) 0
----------------------------	---	---------------------------------



ELEV 686	TDZE 675
REIL Rwy 36 MIRL Rwy 18-36 0	

CATEGORY	A	B	C	D
LPV DA		1061-1 $\frac{1}{4}$	386 (400-1 $\frac{1}{4}$)	
LNAV/ VNAV DA		1214-1 $\frac{3}{4}$	539 (600-1 $\frac{3}{4}$)	
LNAV MDA	1160-1	485 (500-1)	1160-1 $\frac{3}{8}$	485 (500-1 $\frac{3}{8}$)
C CIRCLING	1180-1 494 (500-1)	1240-1 554 (600-1)	1540-2 $\frac{1}{2}$ 854 (900-2 $\frac{1}{2}$)	1540-2 $\frac{3}{4}$ 854 (900-2 $\frac{3}{4}$)

SE-4, 08 NOV 2018 to 06 DEC 2018

SE-4, 08 NOV 2018 to 06 DEC 2018