

APP CRS <b>260°</b>	Rwy Idg <b>3349</b>
	TDZE <b>364</b>
	Apt Elev <b>364</b>

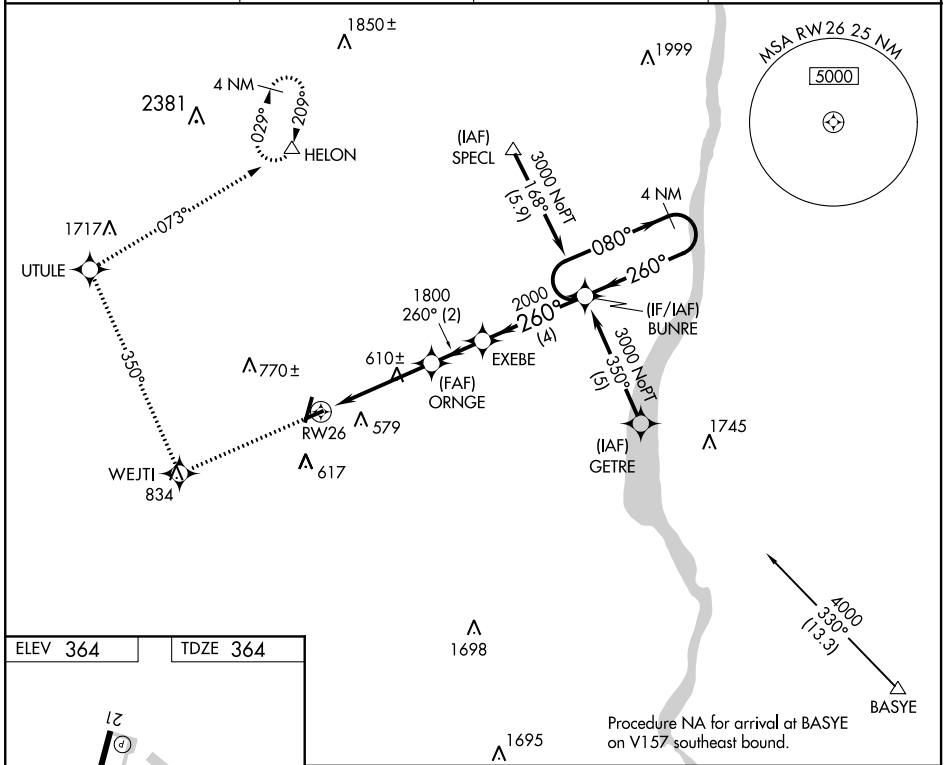
# RNAV (GPS) RWY 26

ORANGE COUNTY (MGJ)

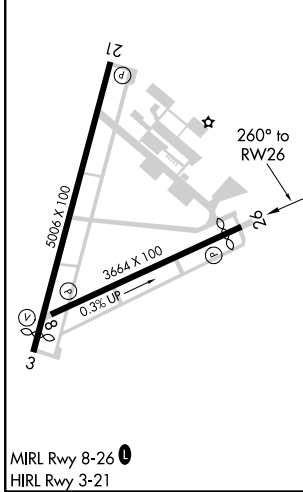
**⚠** DME/DME RNP-0.3 NA. Helicopter visibility reduction below 1 SM NA. When local altimeter setting not received, use Poughkeepsie altimeter setting; increase all MDA 80 feet and increase LNAV and Circling Cats A, C, and D visibility ¼ mile. Night landing: Rwy 21, 26 NA.

**⚠** MISSED APPROACH: Climb to 4000 direct WEJTI and right turn on track 350° to TUTLE and on track 073° to HELON and hold.

ASOS <b>119.275</b>	NEW YORK APP CON <b>132.75 363.1</b>	CLNC DEL <b>123.85</b>	UNICOM <b>122.725 (CTAF)</b>
------------------------	---	---------------------------	---------------------------------



ELEV <b>364</b>	TDZE <b>364</b>
-----------------	-----------------



MIRL Rwy 8-26 **⓪**  
HIRL Rwy 3-21

4000	WEJTI	UTULE	HELON	BUNRE
↑	✧	↷ 350°	tr 073°	△
VGSi and descent angles not coincident (VGSi Angle 3.50/TCH 43).				
RW26		ORNGE	EXEBE	BUNRE
↷ 3.04° TCH 40		↷ 260°	↷ 260°	↷ 080°
4.3 NM		2 NM	4 NM	4 NM Holding Pattern
CATEGORY	A	B	C	D
LNAV MDA	920-1	556 (600-1)	920-1½ 556 (600-1½)	920-1¾ 556 (600-1¾)
CIRCLING	1200-1 836 (900-1)	1200-1¼ 836 (900-1¼)	1200-2½ 836 (900-2½)	1200-2¾ 836 (900-2¾)

NE-2: 08 NOV 2018 to 06 DEC 2018

NE-2: 08 NOV 2018 to 06 DEC 2018