

SWOLF-EIGHT DEPARTURE (SWOLF8 • SWOLF)

SAN DIEGO, CALIFORNIA

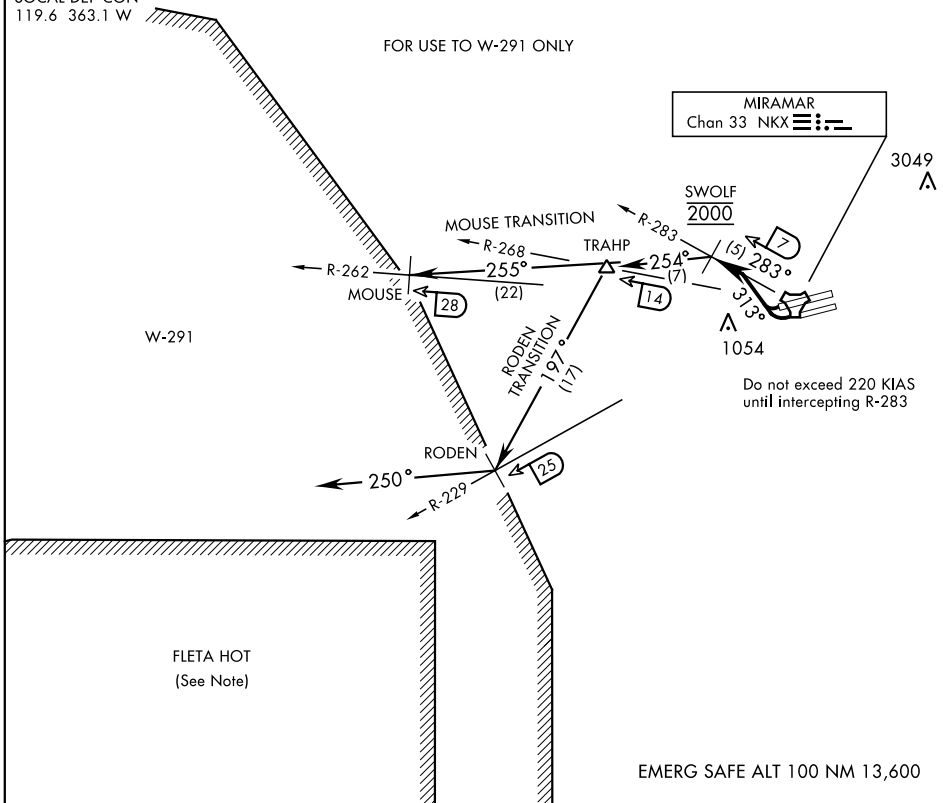
Rwy	Knots	60	120	180	240	300	360
24L/R	V/V(fpm)	780	1560	2340	3120	3900	4680

ATC Climb Rate to 2000

ATIS ★ 352.0
 CLNC DEL
 125.975 254.325
 GND CON
 128.625 307.325
 FOSS TOWER ★
 135.2 298.925
 SOCAL DEP CON
 119.6 363.1 W

SHL-903 [USN]

FOR USE TO W-291 ONLY



SW-3, 08 NOV 2018 to 06 DEC 2018

SW-3, 08 NOV 2018 to 06 DEC 2018

DEPARTURE ROUTE DESCRIPTION

TAKE-OFF RWY 24L/R: Climbing right turn to 2000 via heading 313° to intercept and proceed via NKX TACAN R-283 to SWOLF. Complete turn within NKX 2 DME. Join NKX R-283 at 2000 mand. Cross SWOLF at 2000 mand. Thence...

MOUSE TRANSITION (SWOLF8 • MOUSE): Turn left heading 255 ° to intercept NKX R-262 at MOUSE. Maintain 2000 for entry into W-291.

(Continued on next page)

SWOLF-EIGHT DEPARTURE (SWOLF8 • SWOLF)

SAN DIEGO, CALIFORNIA

MIRAMAR MCAS (JOE FOSS FLD) (KNKX)