

SAN DIEGO, CALIFORNIA

RNAV (GPS) RWY 24R

WAAS CH 61450 W24B	APCH CRS 243°	Rwy Ldg 12,000 TDZE 475 Arprt Elev 477
--------------------------	------------------	--

AL-903 [USN]

MIRAMAR MCAS (JOE FOSS FLD) (KNKX)

▼ ** When ALS inop, increase CAT ABCD vis to ¾ mile.
 *** When ALS inop, increase CAT ABCD vis to ¾ mile.
 *** When ALS inop, increase CAT AB vis to 1 mile,
 CAT CD vis to 2 miles.



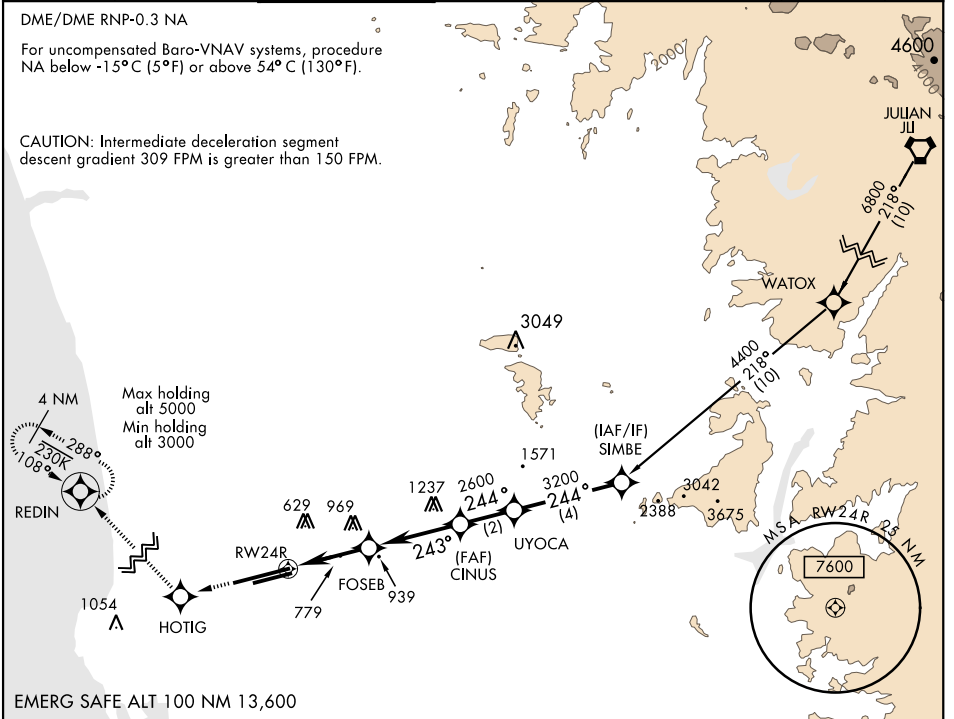
MISSED APPROACH: Climb to 3000 direct HOTIG, 288° track to REDIN and hold.

ATIS * 352.0	SOCAL APP CON 132.2 269.1	FOSS TOWER * 135.2 298.925	GND CON 128.625 307.325	CLNC DEL 125.975 254.325	LA CENTER 291.7	ASR/PAR
-----------------	------------------------------	-------------------------------	----------------------------	-----------------------------	--------------------	---------

DME/DME RNP-0.3 NA

For uncompensated Baro-VNAV systems, procedure NA below -15°C (5°F) or above 54°C (130°F).

CAUTION: Intermediate deceleration segment descent gradient 309 FPM is greater than 150 FPM.



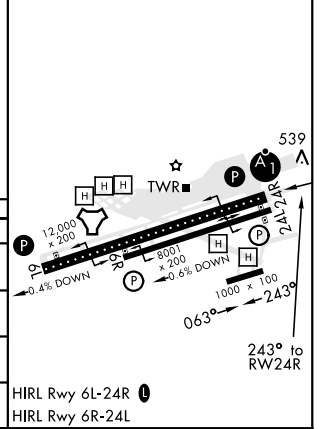
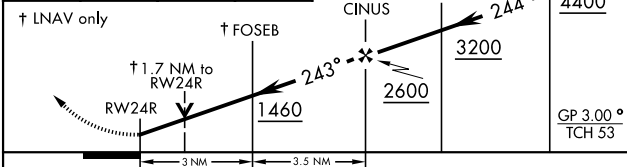
SW-3, 08 NOV 2018 to 06 DEC 2018

SW-3, 08 NOV 2018 to 06 DEC 2018

EMERG SAFE ALT 100 NM 13,600

3000 ↑ HOTIG ↻ REDIN (VGSI and RNAV glidepath not coincident (VGSI angle 3.00°/TCH 57°))
 † LNAV only † FOSEB CINUS UYOCA 244° 4400
 † 1.7 NM to RWY 24R RWY 24R 1460 2600 3200 GP 3.00° TCH 53
 3 NM 3.5 NM

ELEV 477	TDZE 475
----------	----------



CATEGORY	A	B	C	D
LPV DA *		675-½	200 (200-½)	
LNAV/VNAV DA **		725-½	250 (300-½)	
LNAV MDA ***	1080-½	605 (700-½)	1080-1¾	605 (700-1¾)
CIRCLING	1080-1	603 (700-1)	1080-1¾	1180-2¼ (800-2¼)

HIRL Rwy 6L-24R
 HIRL Rwy 6R-24L

SAN DIEGO, CALIFORNIA
 Amdt 3 13SEP18

32°52'N-117°09'W

MIRAMAR MCAS (JOE FOSS FLD) (KNKX)

RNAV (GPS) RWY 24R