

RNAV (GPS) RWY 24L

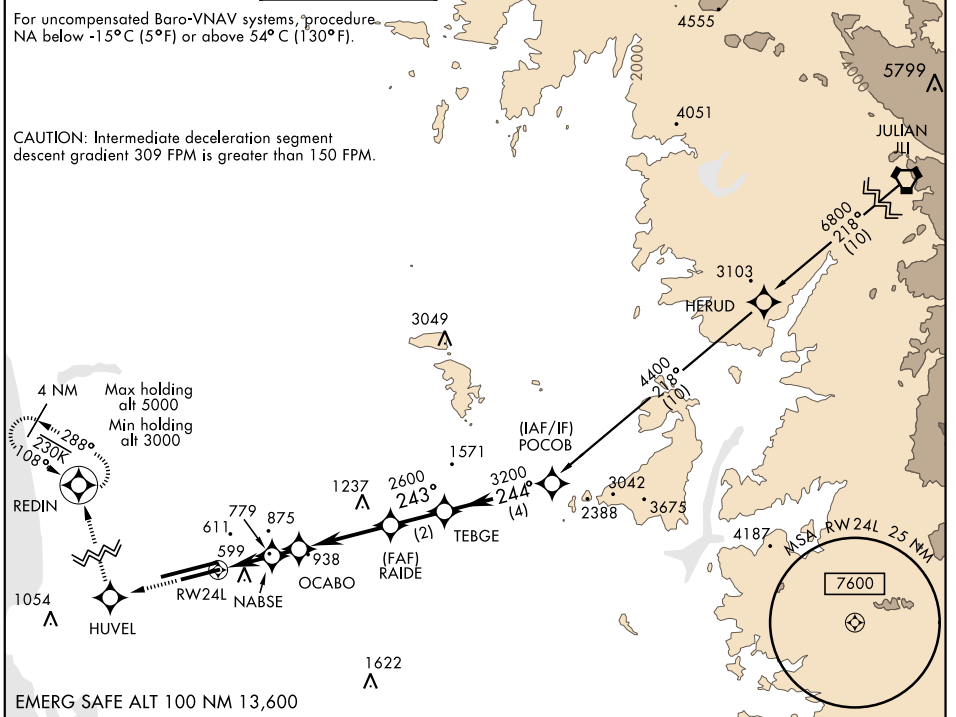
WAAS CH 54028 W24A	APCH CRS 243°	Rwy ldg TDZE Arprt Elev	8001 477 477
--------------------------	------------------	-------------------------------	--------------------

AL-903 [USN]

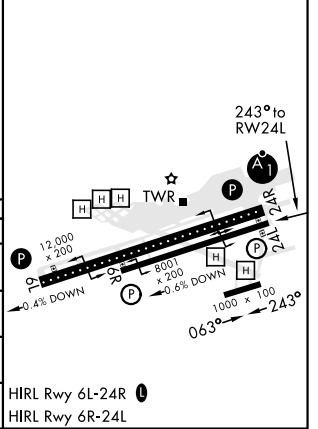
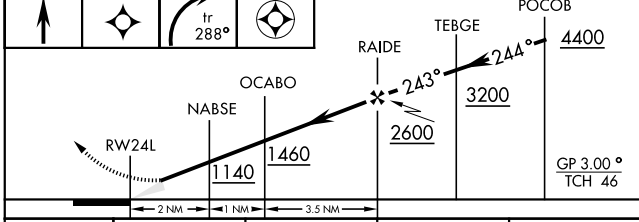
MIRAMAR MCAS (JOE FOSS FLD) (KNKX)

▼ DME/DME RNP-0.3 NA		MISSED APPROACH: Climb to 3000 direct HUVEL, 288° track to REDIN and hold.			
----------------------	--	--	--	--	--

ATIS ★ 352.0	SOCAL APP CON 132.2 269.1	FOSS TOWER ★ 135.2 298.925 0	GND CON 128.625 307.325	CLNC DEL 125.975 254.325	LA CENTER 291.7	ASR/ PAR
-----------------	------------------------------	---------------------------------	----------------------------	-----------------------------	--------------------	-------------



3000	HUVEL	REDIN	ELEV 477	TDZE 477
------	-------	-------	----------	----------



CATEGORY	A		B		C		D	
LPV DA	677- ⁷ / ₈		200		(200- ³ / ₈)			
LNAV/VNAV DA	733- ⁷ / ₈ 256 (300- ⁷ / ₈)	744- ⁷ / ₈ 267 (300- ⁷ / ₈)	752- ⁷ / ₈ 275 (300- ⁷ / ₈)	763- ⁷ / ₈ 286 (300- ⁷ / ₈)				
LNAV MDA	1040-1 563 (600-1)		1040-1 ⁵ / ₈ 563 (600-1 ⁵ / ₈)					
CIRCLING	1040-1 563 (600-1)		1040-1 ⁵ / ₈ 563 (600-1 ⁵ / ₈)	1180-2 ¹ / ₄ 703 (800-2 ¹ / ₄)	HIRL Rwy 6L-24R 0 HIRL Rwy 6R-24L			

RNAV (GPS) RWY 24L

SW-3, 08 NOV 2018 to 06 DEC 2018

SW-3, 08 NOV 2018 to 06 DEC 2018