

WAAS CH <b>40020</b> <b>W35A</b>	APP CRS <b>349°</b>	Rwy Idg TDZE Apt Elev	<b>7004</b> <b>103</b> <b>121</b>
--	------------------------	-----------------------------	---

# RNAV (GPS) RWY 35

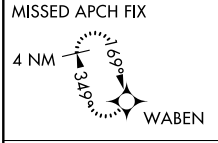
PENSACOLA INTL (PNS)

RNP APCH

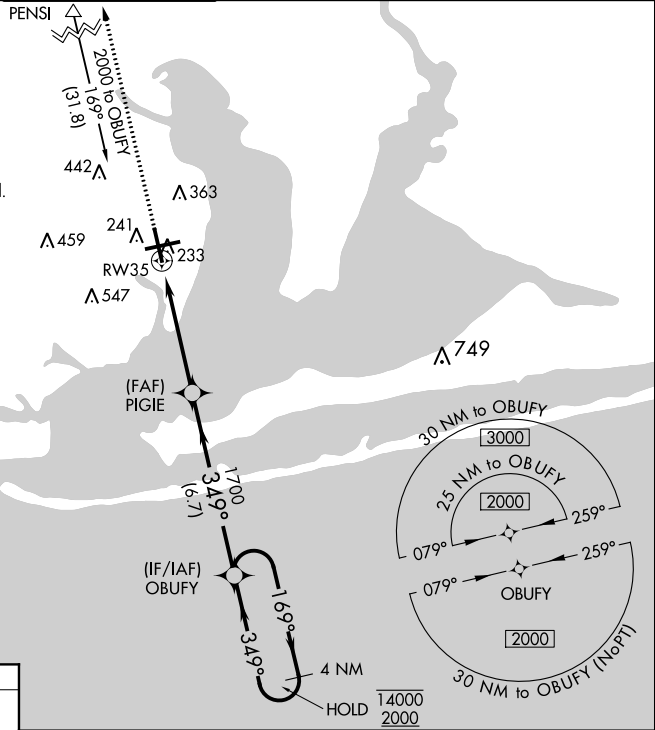
▼ For uncompensated Baro-VNAV systems, LNAV/VNAV NA below 1°C or above 54°C. CAUTION: Intensive VFR student training in vicinity of airport.

MISSED APPROACH: Climb to 2700 direct WABEN and hold.

ATIS <b>121.25</b>	PENSACOLA APP CON <b>119.0 269.375</b>	PENSACOLA TOWER ★ <b>119.9 (CTAF) 0 257.8</b>	GND CON <b>121.9 348.6</b>	CLNC DEL <b>123.725 256.875</b>	UNICOM <b>122.95</b>
-----------------------	---	--	-------------------------------	------------------------------------	-------------------------

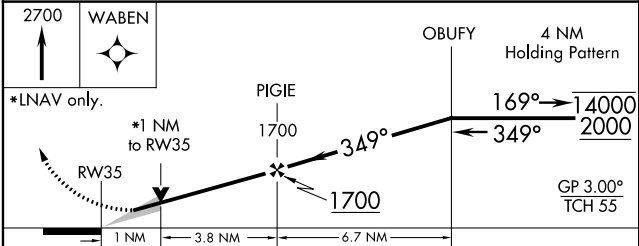
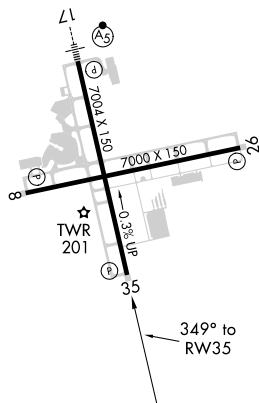


Procedure NA for arrivals at PENSI on V198-241 westbound.



ELEV 121	TDZE 103
----------	----------

REIL Rwy 8, 26 and 35  
TDZ/CL Rwy 17  
HIRL Rwy 8-26 and 17-35



CATEGORY	A	B	C	D
LPV DA		303/40	200 (200-3/4)	
LNAV/VNAV DA		384/45	281 (300-7/8)	
LNAV MDA		480/55	377 (400-1)	
CIRCLING	580-1 459 (500-1)	680-1 559 (600-1)	680-1½ 559 (600-1½)	680-2 559 (600-2)

SE-3, 08 NOV 2018 to 06 DEC 2018

SE-3, 08 NOV 2018 to 06 DEC 2018