

NORWALK, OHIO

AL-6640 (FAA)

18228

WAAS CH <b>86835</b> <b>W28A</b>	APP CRS <b>276°</b>	Rwy Idg TDZE Apt Elev	<b>3540</b> <b>851</b> <b>853</b>
--	------------------------	-----------------------------	---

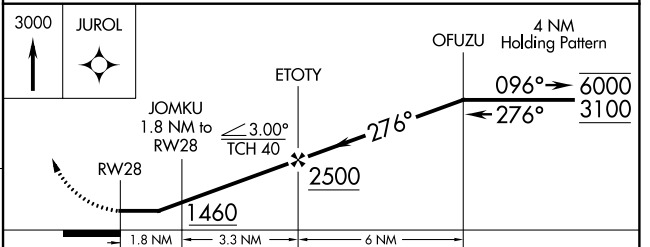
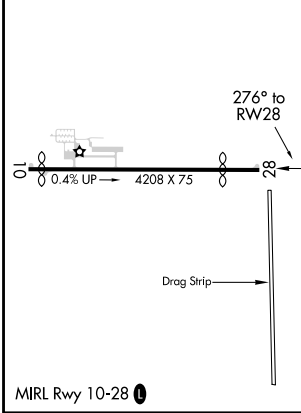
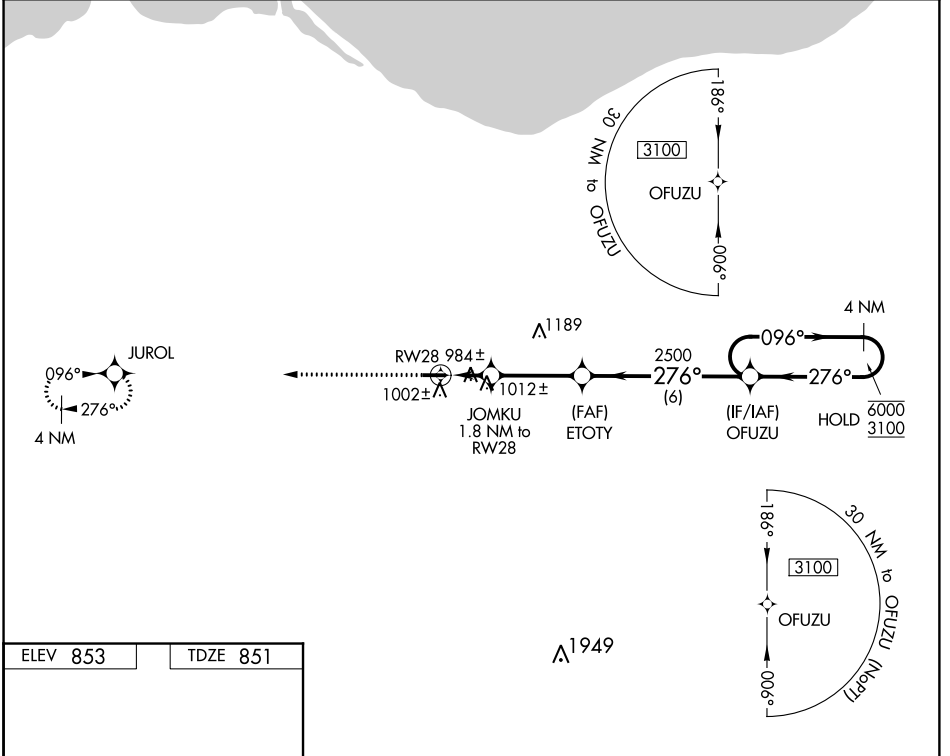
# RNAV (GPS) RWY 28

NORWALK-HURON COUNTY (5A1)

RNP APCH. MISSED APPROACH: Climb to 3000 direct JUROL and hold.

▼ Rwy 28 helicopter visibility reduction below 1 SM NA. Procedure NA at night.  
 ▲ NA Use Cleveland-Hopkins Intl altimeter setting.

CLEVELAND-HOPKINS INTL ASOS <b>127.85</b>	MANSFIELD APP CON * <b>124.2 390.8</b>	UNICOM <b>122.8 (CTAF) 0</b>
--	---	---------------------------------



CATEGORY	A	B	C	D
LP MDA	1320-1	469 (500-1)	1320-1 $\frac{3}{8}$ 469 (500-1 $\frac{3}{8}$ )	NA
LNAV MDA	1360-1	509 (600-1)	1360-1 $\frac{3}{8}$ 509 (600-1 $\frac{3}{8}$ )	NA
<b>C</b> CIRCLING	1420-1	567 (600-1)	1440-1 $\frac{1}{2}$ 587 (600-1 $\frac{1}{2}$ )	NA

NORWALK, OHIO  
Orig-B 16AUG18

41°15'N-82°33'W

# NORWALK-HURON COUNTY (5A1)

## RNAV (GPS) RWY 28

EC-2, 11 OCT 2018 to 08 NOV 2018

EC-2, 11 OCT 2018 to 08 NOV 2018