

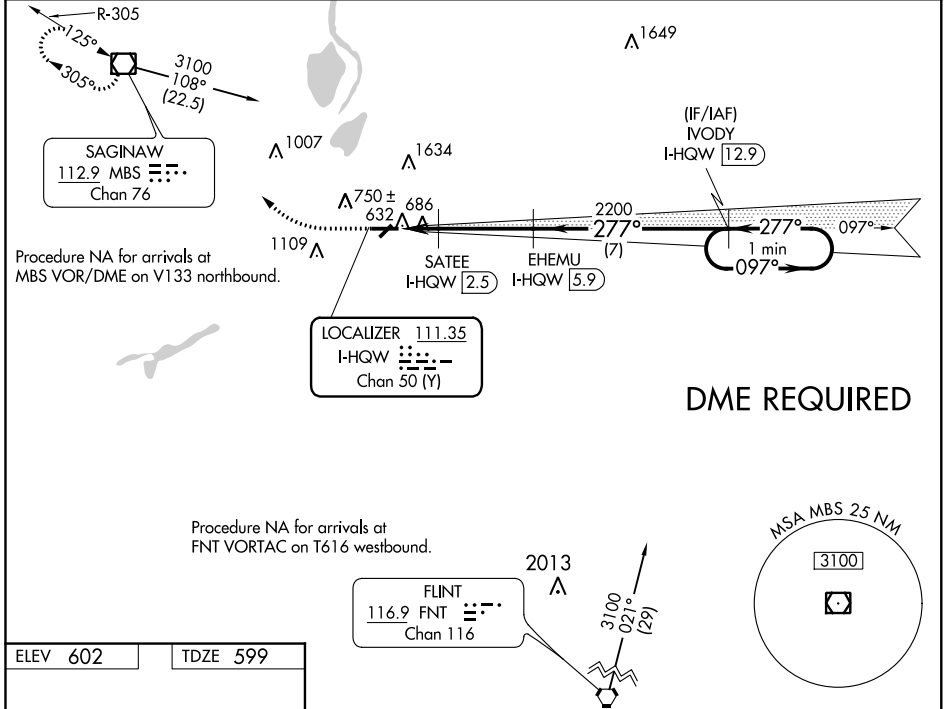
LOC/DME I-HQW 111.35 Chan 50 (Y)	APP CRS 277°	Rwy Idg 5002 TDZE 599 Apt Elev 602
--	------------------------	---

ILS or LOC RWY 28

SAGINAW COUNTY H W BROWNE (HYX)

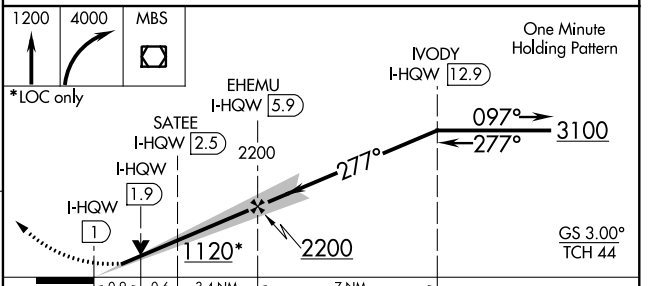
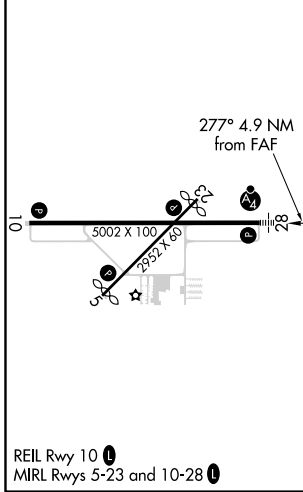
<p>⚠ Inoperative table does not apply to S-ILS 28. DME required. Circling Rwy 5, 23 NA at night. Circling NA for Cat C north of Rwy 10-28.</p>	<p>MALSF</p>	<p>MISSED APPROACH: Climb to 1200 then climbing right turn to 4000 direct MBS VOR/DME and hold, continue climb-in-hold to 4000.</p>
---	---------------------	--

<p>AWOS-3 118.325</p>	<p>SAGINAW APP CON ★ 120.95 235.625</p>	<p>UNICOM 122.8 (CTAF) 0</p>
----------------------------------	--	---



DME REQUIRED

ELEV 602	TDZE 599
----------	----------



CATEGORY	A	B	C	D
S-ILS 28		802- ³ / ₄ 203 (200- ³ / ₄)		NA
S-LOC 28		940- ³ / ₄ 341 (400- ³ / ₄)		NA
C CIRCLING	1100-1	498 (500-1)	1460- ² / ₂ 858 (900- ² / ₂)	NA

EC-1, 11 OCT 2018 to 08 NOV 2018

EC-1, 11 OCT 2018 to 08 NOV 2018