

NDB AVZ 260	APP CRS 193°	Rwy Idg TDZE Apt Elev	5006 474 474
-----------------------	------------------------	-----------------------------	---

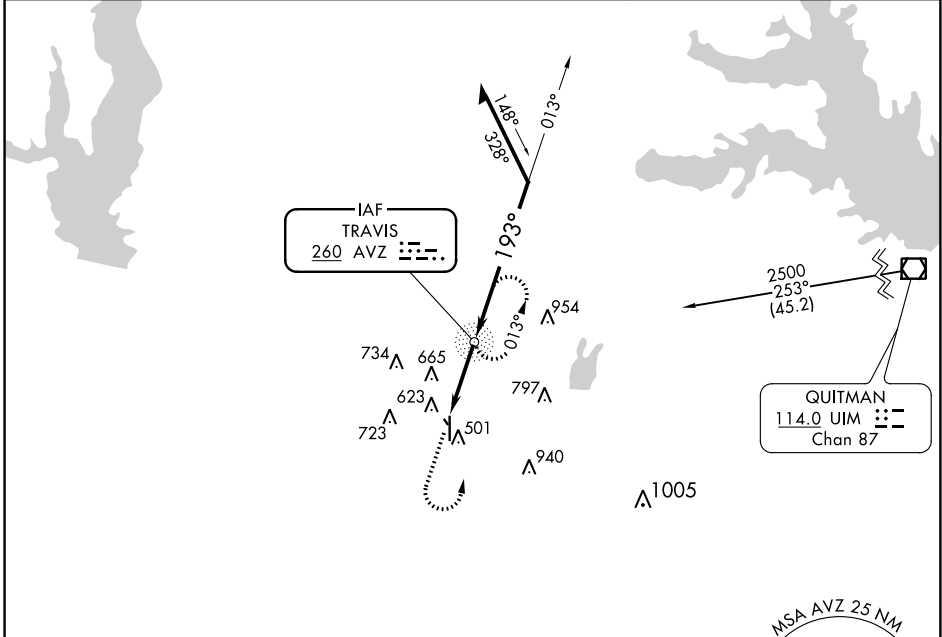
NDB RWY 17

TERRELL MUNI (TRL)

⚠ When VGSI inop, Straight-in/Circling Rwy 17 procedure NA at night. If local altimeter setting not received, use Dallas-Love Field altimeter setting and increase all MDA's 80 feet.

MISSED APPROACH: Climb to 1500 then climbing left turn to 2500 direct AVZ NDB and hold.

ASOS 119.275	FORT WORTH CENTER 132.025 360.75	UNICOM 122.8 (CTAF) 📻
------------------------	--	--



ELEV 474	TDZE 474
----------	----------

193° 2.8 NM from FAF

RLS Rwy 17 **📻**
REIL Rwys 17 and 35
MIRL Rwys 17-35 **📻**

FAF to MAP 2.8 NM

Knots	60	90	120	150	180
Min:Sec	2:48	1:52	1:24	1:07	0:56

1500	2500	AVZ
------	------	-----

Remain within 10 NM

AVZ NDB

013° → 2500

193° → 1600

3.60° TCH 45

2.8 NM

CATEGORY	A	B	C	D
S-17	980-1	506 (600-1)	980-1½ 506 (600-1½)	NA
CIRCLING	980-1	506 (600-1)	980-1½ 506 (600-1½)	NA

SC-2, 11 OCT 2018 to 08 NOV 2018

SC-2, 11 OCT 2018 to 08 NOV 2018