

(TERPZ6.TERPZ) 16035

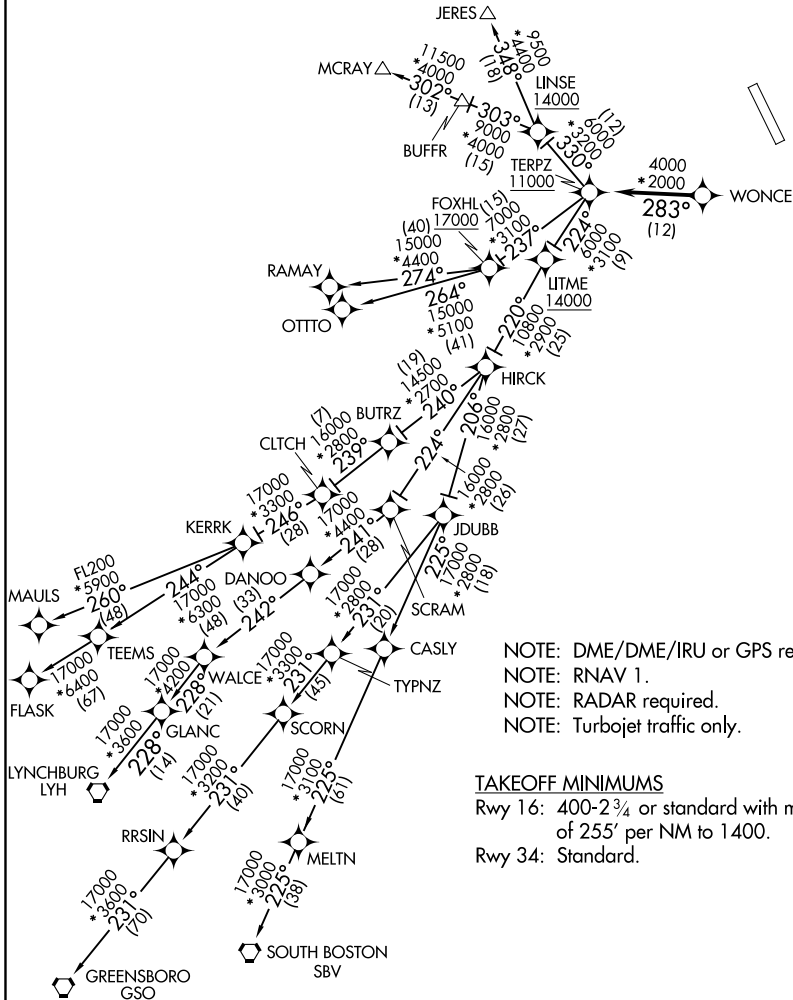
SL-5533 (FAA)

CARROLL COUNTY RGNL/JACK B POAGE FIELD(DMW)
WESTMINSTER, MARYLAND

TERPZ SIX DEPARTURE (RNAV)

AWOS-3
121.25
CLNC DEL
129.525
UNICOM
122.7 (CTAF)
POTOMAC DEP CON
125.52

TOP ALTITUDE:
RAMAY, OTTTO, MAULS, FLASK,
SBV, LYH, GSO TRANSITIONS:
17000
JERES, MCRAY TRANSITIONS:
16000



NOTE: DME/DME/IRU or GPS required.
NOTE: RNAV 1.
NOTE: RADAR required.
NOTE: Turbojet traffic only.

TAKEOFF MINIMUMS

Rwy 16: 400-2³/₄ or standard with minimum climb of 255' per NM to 1400.
Rwy 34: Standard.

NOTE: Chart not to scale.

TERPZ SIX DEPARTURE (RNAV)

CARROLL COUNTY RGNL/JACK B POAGE FIELD(DMW)
WESTMINSTER, MARYLAND

(TERPZ6.TERPZ) 04FEB16

NE-3, 11 OCT 2018 to 08 NOV 2018

NE-3, 11 OCT 2018 to 08 NOV 2018