

| | | | |
|--|------------------------|-----------------------------|---|
| WAAS CH 77633 W35A | APP CRS 353° | Rwy Idg TDZE Apt Elev | 5701 2918 2918 |
|--|------------------------|-----------------------------|---|

RNAV (GPS) RWY 35

PERRYTON OCHILTREE COUNTY (PYX)

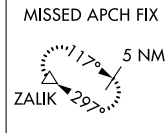
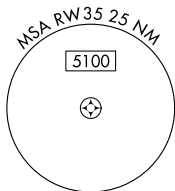
▼ Baro-VNAV and VDP NA when using Gage altimeter setting. For uncompensated Baro-VNAV systems, LNAV/VNAV NA below -20°C (-4°F) or above 54°C (130°F).
 ▲ When local altimeter setting not received, use Gage altimeter setting and increase all DAs 208 feet and MDA 220 feet; increase LPV and LNAV/VNAV Cats A and B visibility ¼ miles and Circling Cat B visibility ¼ mile. DME/DME RNP -0.3 NA. Helicopter visibility reduction below ¾ SM NA. Circling NA to Rws 4 and 22.

MISSED APPROACH: Climb to 6000 direct LUMUQ and on track 031° to ZALIK and hold.

AWOS-3
118.175

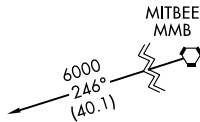
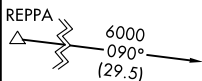
KANSAS CITY CENTER
126.95 379.2

UNICOM
122.8 (CTAF) 0

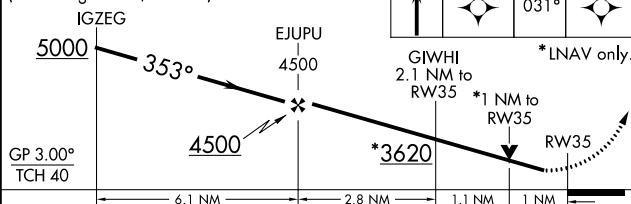


▲ 3491

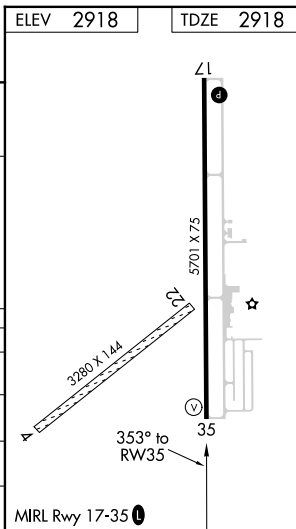
Procedure NA for arrivals on MMB VORTAC airway radials 205 CW 327.



VGSI and RNAV glidepath not coincident (VGSI Angle 3.50/TCH 23).



| CATEGORY | A | B | C | D |
|--------------|-----------------------|-----------------------|---|----|
| LPV DA | 3168-7/8 | 250 (300-7/8) | | NA |
| LNAV/VNAV DA | 3168-7/8 | 250 (300-7/8) | | NA |
| LNAV MDA | 3320-1 | 402 (500-1) | | NA |
| CIRCLING | 3320-1 402 (500-1) | 3580-1 662 (700-1) | | NA |



SC-2, 11 OCT 2018 to 08 NOV 2018

SC-2, 11 OCT 2018 to 08 NOV 2018