

WAAS CH <b>40005</b> <b>W32A</b>	APP CRS <b>320°</b>	Rwy Idg <b>3576</b> TDZE <b>671</b> Apt Elev <b>672</b>
--	------------------------	---

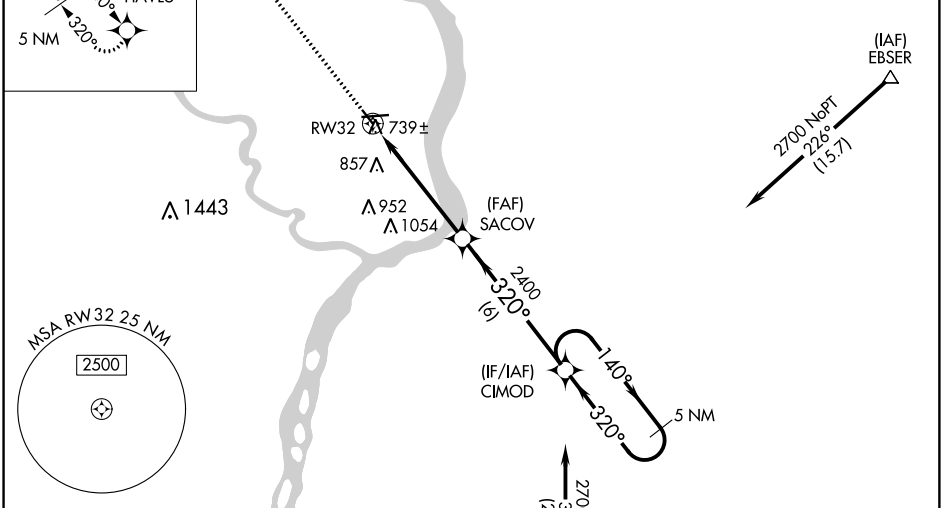
# RNAV (GPS) RWY 32

KEOKUK MUNI (EOK)

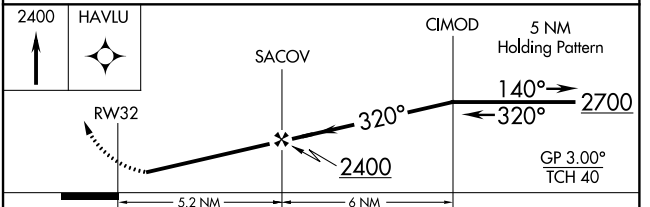
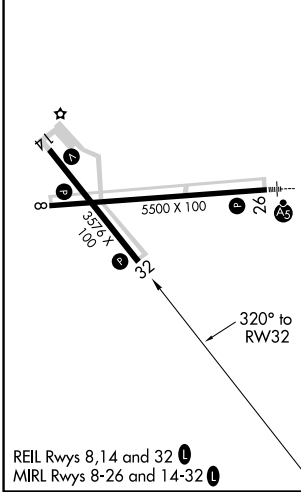
▼ DME/DME RNP -0.3 NA. Helicopter visibility reduction below 1 SM not authorized.  
 ▲ For uncompensated Baro-VNAV systems, LNAV/VNAV NA below -16°C (4°F) or above 54°C (130°F). When local altimeter setting not received, use Burlington altimeter setting and increase all DA 59 feet and all MDA 60 feet, increase LNAV/VNAV Cat A/B/C and LNAV and Circling Cat C visibility ¼ mile. Baro-VNAV NA when using Burlington altimeter setting. Rwy 32 Straight-in and Circling minimums NA at night.

MISSED APPROACH: Climb to 2400 direct HAVLU and hold.

AWOS-3 **118.375**      KANSAS CITY CENTER **126.225 317.775**      UNICOM **122.8 (CTAF) 0**



ELEV 672      TDZE 671



CATEGORY	A	B	C	D
LPV DA	921-1	250 (300-1)		NA
LNAV/VNAV DA	1163-1¾	492 (500-1¾)		NA
LNAV MDA	1120-1	449 (500-1)	1120-1¼ 449 (500-1¼)	NA
CIRCLING	1180-1	508 (600-1)	1220-1½ 548 (600-1½)	NA

KEOKUK, IOWA  
 Orig-B 13DEC12

40°28'N-91°26'W

# RNAV (GPS) RWY 32

NC-3, 11 OCT 2018 to 08 NOV 2018

NC-3, 11 OCT 2018 to 08 NOV 2018

Procedure NA for arrivals at UIN VORTAC on airway radials 321 CW 048.

