

CENTERPOINT TWO ARRIVAL

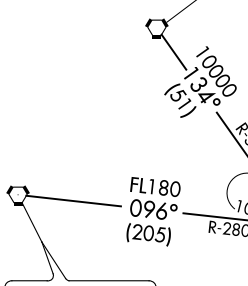
SAN ANTONIO, TEXAS

SAN ANTONIO APP CON
 125.1 307.0 (Rwys 13R and 22)
 125.7 290.225 (Rwys 4 and 31)
 KELLY FLD ATIS
 120.45 273.5
 RANDOLPH AFB ATIS*
 290.525
 SAN ANTONIO INTL D-ATIS
 118.9
 STINSON MUNI ATIS*
 128.8

JUNCTION
 116.0 JCT
 Chan 107
 N30°35.88' -W99°49.05'
 L-19, H-7

STONEWALL
 113.8 STV
 Chan 85

BENEY
 N29°50.33'
 W98°59.43'
 TURBOJET VERTICAL
 NAVIGATION PLANNING
 INFORMATION
 Expect 10000



FORT STOCKTON
 116.9 FST
 Chan 116
 N30°57.13'
 W102°58.54'
 L-19, H-6

CENTER POINT
 117.5 CSI
 Chan 122
 N29°55.34'
 W99°12.87'

LOCALIZER 110.9
 I-ANT
 Chan 46

LOCALIZER 109.7
 I-SAT

SAN ANTONIO
 116.8 SAT
 Chan 115

SAN ANTONIO INTL

RANDOLPH AFB

STINSON MUNI

LOCALIZER 110.9
 I-HZR
 Chan 46

NOTE: RADAR Required
 NOTE: When SAT is landing Rwy 13, all aircraft cross MEDIN at 250 KIAS or less.

NOTE: Chart not to scale.

ARRIVAL ROUTE DESCRIPTION

FORT STOCKTON TRANSITION (FST.CSI2): From over FST VORTAC via FST R-096 and CSI R-280 to CSI VORTAC. Thence . . .

JUNCTION TRANSITION (JCT.CSI2): From over JCT VORTAC via JCT R-134 and CSI R-314 to CSI VORTAC. Thence . . .

. . . From over CSI VORTAC on CSI R-105 to REUBE INT. Expect vectors to final approach course.

CENTERPOINT TWO ARRIVAL

SAN ANTONIO, TEXAS