

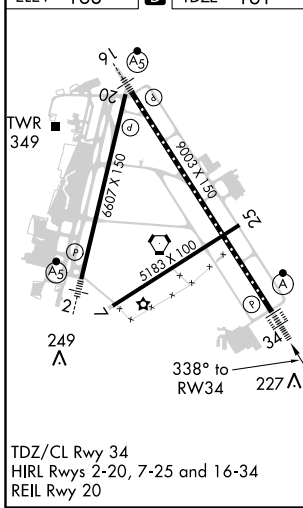
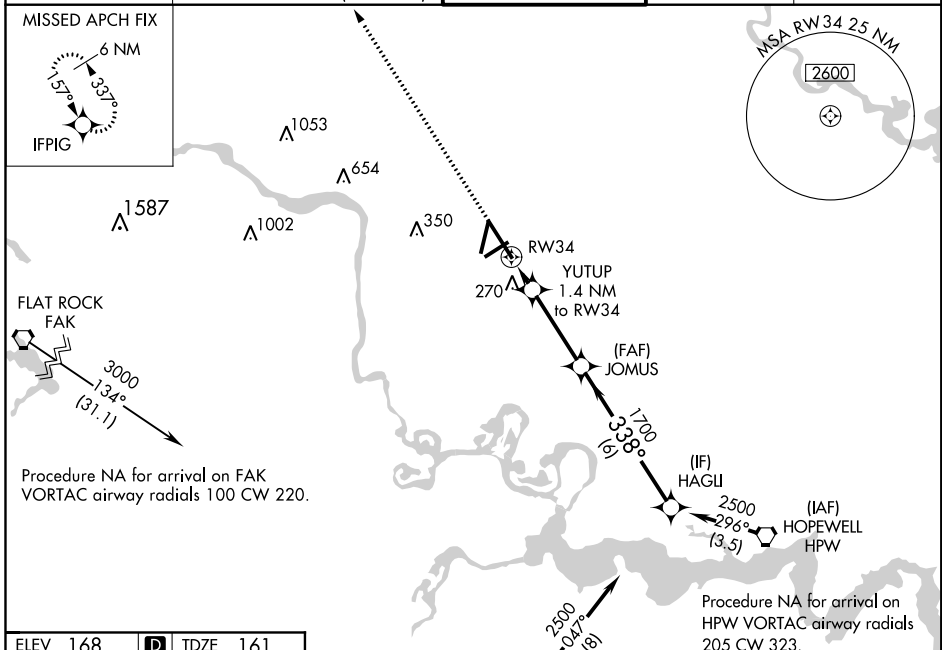
WAAS CH 97520 W34A	APP CRS 338°	Rwy Idg TDZE Apt Elev	9003 161 168
--	------------------------	-----------------------------	---

RNAV (GPS) Z RWY 34

RICHMOND INTL (RIC)

RNP APCH. ▼ For uncompensated Baro-VNAV systems, LNAV/VNAV NA below -11°C (13°F) or above 54°C (130°F). For inop ALS, increase LNAV/VNAV all Cats visibility to 1¼ SM and LNAV Cats C and D visibility to RVR 5500.	ALSF-2 	MISSED APPROACH: Climb to 2500 direct IFPIG and hold.
--	------------	--

ATIS 119.15 263.025	POTOMAC APP CON 126.4 282.375 (001°-185°) 126.75 307.2 (186°-360°)	RICHMOND TOWER 121.1 257.8	GND CON 121.9 348.6	CLNC DEL 127.55 348.6
-------------------------------	--	--------------------------------------	-------------------------------	---------------------------------



ELEV 168	D	TDZE 161		
2500	IFPIG	HAGLI 2500		
*LNAV only.				
YUTUP 1.4 NM to RW34	JOMUS 1700	HAGLI 2500		
RW34	*660	GP 3.00° TCH 54		
1.4 NM	3.3 NM	6 NM		
CATEGORY	A	B	C	D
LPV DA	361/18		200 (200-½)	
LNAV/VNAV DA	530/37		369 (400-¾)	
LNAV MDA	520/24 359 (400-½)		520/30 359 (400-¾)	
C CIRCLING	660-1 492 (500-1)		700-1½ 552 (600-1½) 720-2 552 (600-2)	

NE-3, 11 OCT 2018 to 08 NOV 2018

NE-3, 11 OCT 2018 to 08 NOV 2018