

APP CRS	Rwy Idg	<b>5002</b>
<b>177°</b>	TDZE	<b>85</b>
	Apt Elev	<b>86</b>

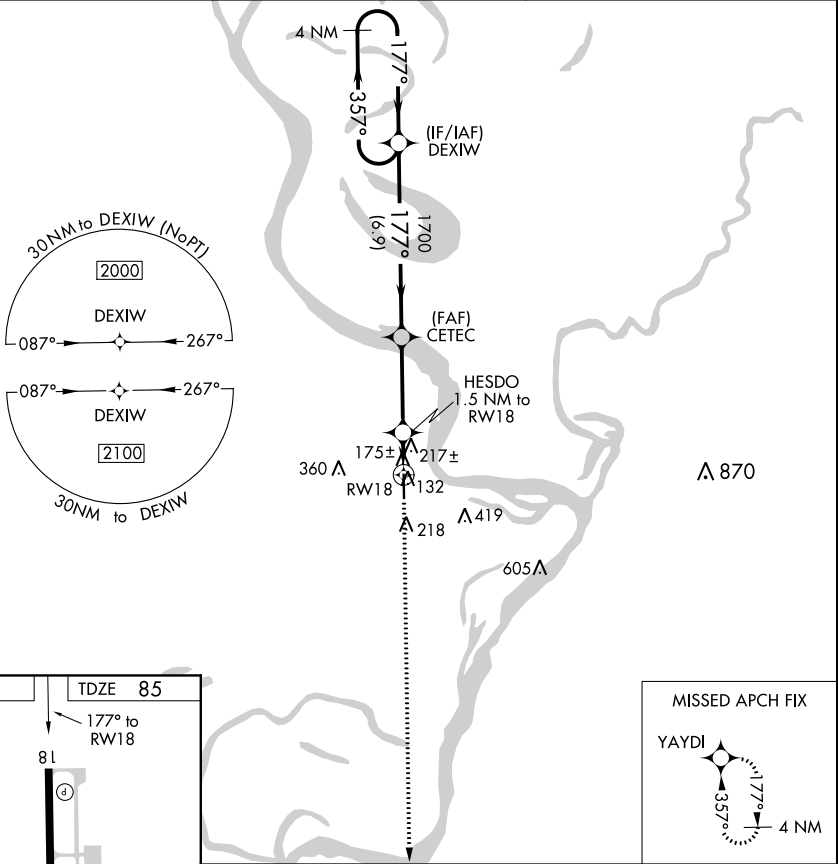
# RNAV (GPS) RWY 18

VICKSBURG TALLULAH RGNL (TVR)

**⚠** DME/DME RNP-0.3 NA. When local altimeter setting not received, use Vicksburg Muni, MS altimeter setting and increase all MDA 40 feet and visibility Cats C and D ¼ mile. Helicopter visibility reduction below ¼ SM NA.

**⚠** MISSED APPROACH: Climb to 2000 direct YAYDI and hold.

ASOS <b>118.525</b>	MEMPHIS CENTER <b>132.5 259.1</b>	UNICOM <b>123.0 (CTAF) 0</b>
------------------------	--------------------------------------	---------------------------------



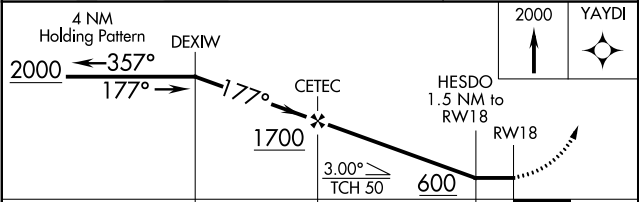
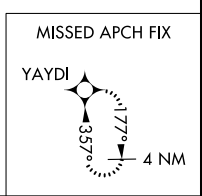
SC-4, 11 OCT 2018 to 08 NOV 2018

SC-4, 11 OCT 2018 to 08 NOV 2018

ELEV 86	TDZE 85
---------	---------

**D** 177° to RWY 18

REIL Rwy 18  
MIRL Rwy 18-36



CATEGORY	A	B	C	D
LNAV MDA	480-1	395 (400-1)	480-1 1/8	395 (400-1 1/8)
<b>C</b> CIRCLING	540-1	454 (500-1)	720-1 3/4 634 (700-1 3/4)	720-2 634 (700-2)