

WAAS CH 56242 W13A	APP CRS 143°	Rwy Idg TDZE Apt Elev	4001 1115 1130
---------------------------------	------------------------	-----------------------------	---

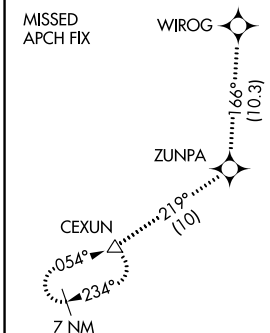
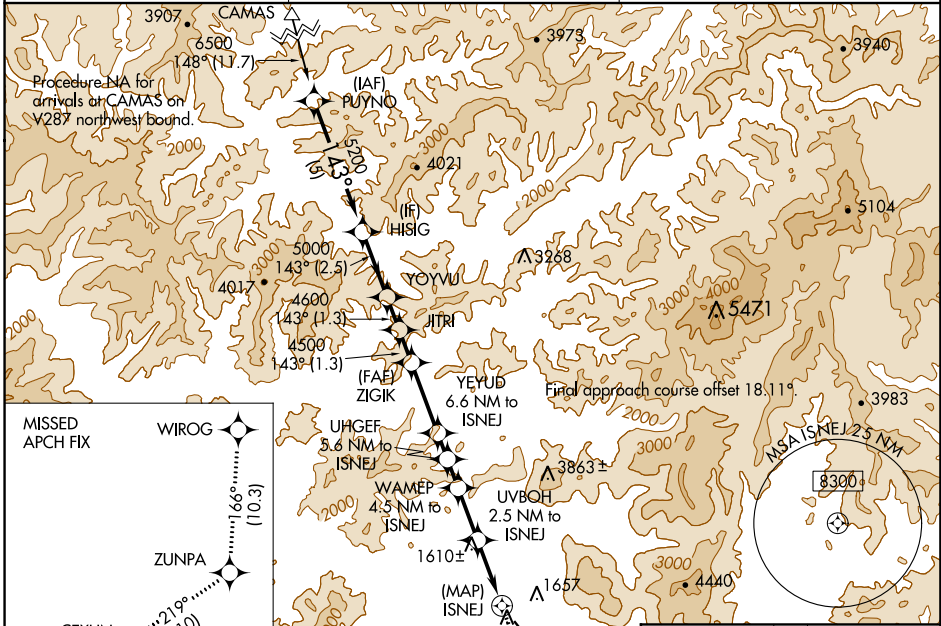
RNAV (GPS) RWY 13

GRANTS PASS (3S8)

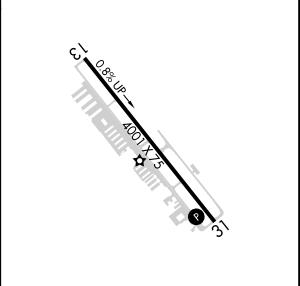
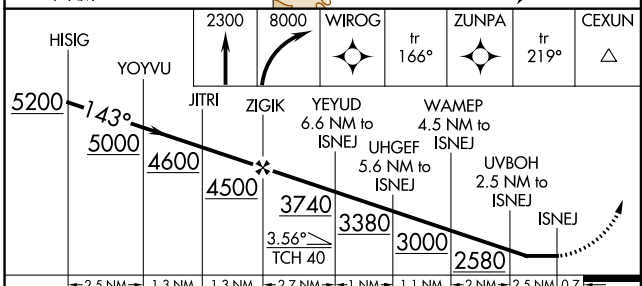
⚠ Circling NA northeast of Rwy 13-31. Rwy 13 helicopter visibility reduction below 1 SM NA. DME/DME RNP-0.3 NA. Straight-in Rwy 13 NA at night, Circling Rwy 13 NA at night.

⚠ MISSED APPROACH: Climb to 2300 then climbing right turn to 8000 direct WIROG and on track 166° to ZUNPA and on track 219° to CEXUN and hold.

AWOS-3PT 120.0	CASCADE APP CON ★ 124.3 379.9	UNICOM 122.8 (CTAF) 0
--------------------------	---	---------------------------------



ELEV 1130	TDZE 1115
-----------	-----------



CATEGORY	A	B	C	D
LP MDA	1680-1	565 (600-1)	1680-1¾	565 (600-1¾)
C CIRCLING	1840-1 710 (800-1)	2020-1¼ 890 (900-1¼)	2180-3 1050 (1100-3)	2340-3 1210 (1300-3)

REIL Rwy 13 and 31 **0**
MIRL Rwy 13-31 **0**

NW-1, 11 OCT 2018 to 08 NOV 2018

NW-1, 11 OCT 2018 to 08 NOV 2018