

SAGINAW, MICHIGAN

AL-6474 (FAA)

18144

VOR/DME MBS 112.9 Chan 76	APP CRS 125°	Rwy Idg TDZE Apt Elev	N/A N/A 601
---	------------------------	-----------------------------	--

VOR/DME-A

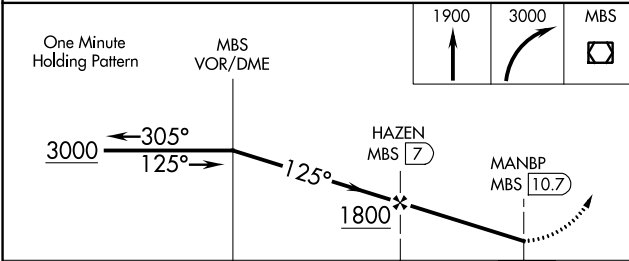
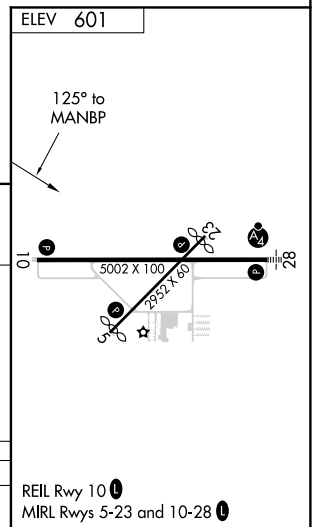
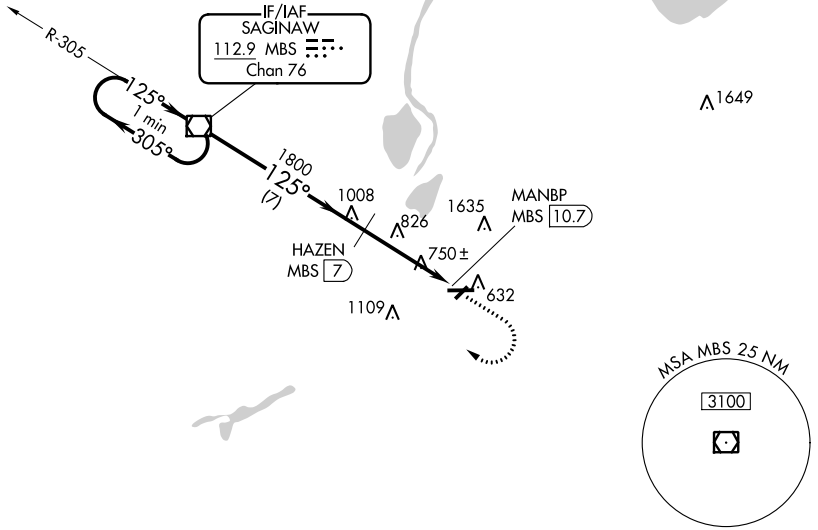
SAGINAW COUNTY H W BROWNE (HYX)

⚠ Circling to Rwy 5/23 NA at night. When local altimeter setting not received, use Saginaw MBS Intl altimeter setting and increase all MDA 40 feet.

⚠ MISSED APPROACH: Climb to 1900 then climbing right turn to 3000 direct MBS VOR/DME and hold.

AWOS-3 118.325	SAGINAW APP CON ★ 120.95 235.625	UNICOM 122.8 (CTAF) 0
--------------------------	--	---------------------------------

NoPT for arrival on MBS VOR/DME
airway radials 212 CW 016.



CATEGORY	A	B	C	D
CIRCLING	1160-1	559 (600-1)	1160-1½ 559 (600-1½)	NA

REIL Rwy 10 **0**
MIRL Rwy 5-23 and 10-28 **0**

EC-1, 11 OCT 2018 to 08 NOV 2018

EC-1, 11 OCT 2018 to 08 NOV 2018

SAGINAW, MICHIGAN
Amdt 4 07MAR13

SAGINAW COUNTY H W BROWNE (HYX)

43°26'N - 83°52'W

VOR/DME-A