

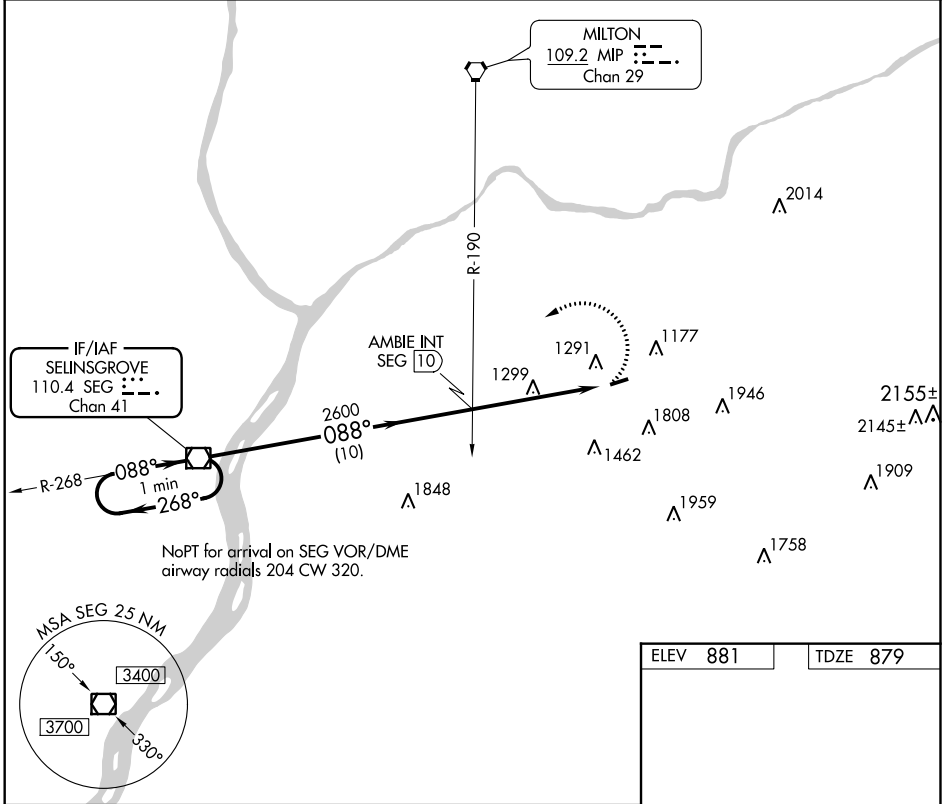
VOR/DME SEG	APP CRS	Rwy Idg	3297
110.4	088°	TDZE	879
Chan 41		Apt Elev	881

VOR RWY 8
NORTHUMBERLAND COUNTY (N79)

V Helicopter visibility reduction below 1 SM NA. Procedure NA at night.
NA When local altimeter setting not received, use Selingsgrove altimeter setting and increase all MDA 100 feet.

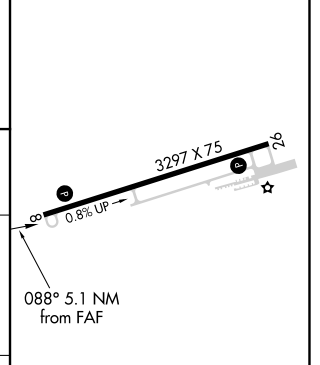
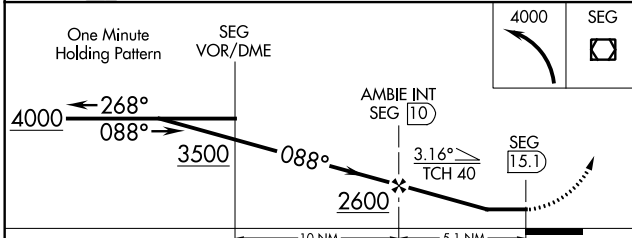
MISSED APPROACH: Climbing left turn to 4000 direct SEG VOR/DME and hold.

AWOS-3 119.175	HARRISBURG APP CON 118.25 269.45	UNICOM 122.8 (CTAF)	121.8 0
--------------------------	--	-------------------------------	----------------



NoPT for arrival on SEG VOR/DME
airway radials 204 CW 320.

ELEV 881	TDZE 879
----------	----------



CATEGORY	A	B	C	D
S-8	1980-1¼ 1101 (1100-1¼)	1980-1½ 1101 (1100-1½)	1980-3 1101 (1100-3)	NA
CIRCLING	1980-1¼ 1099 (1100-1¼)	1980-1½ 1099 (1100-1½)	1980-3 1099 (1100-3)	NA

MRL Rwy 8-26	
REIL Rws 8 and 26	
FAF to MAP 5.1 NM	
Knots	60 90 120 150 180
Min:Sec	5:06 3:24 2:33 2:02 1:42

NE-4, 11 OCT 2018 to 08 NOV 2018

NE-4, 11 OCT 2018 to 08 NOV 2018