

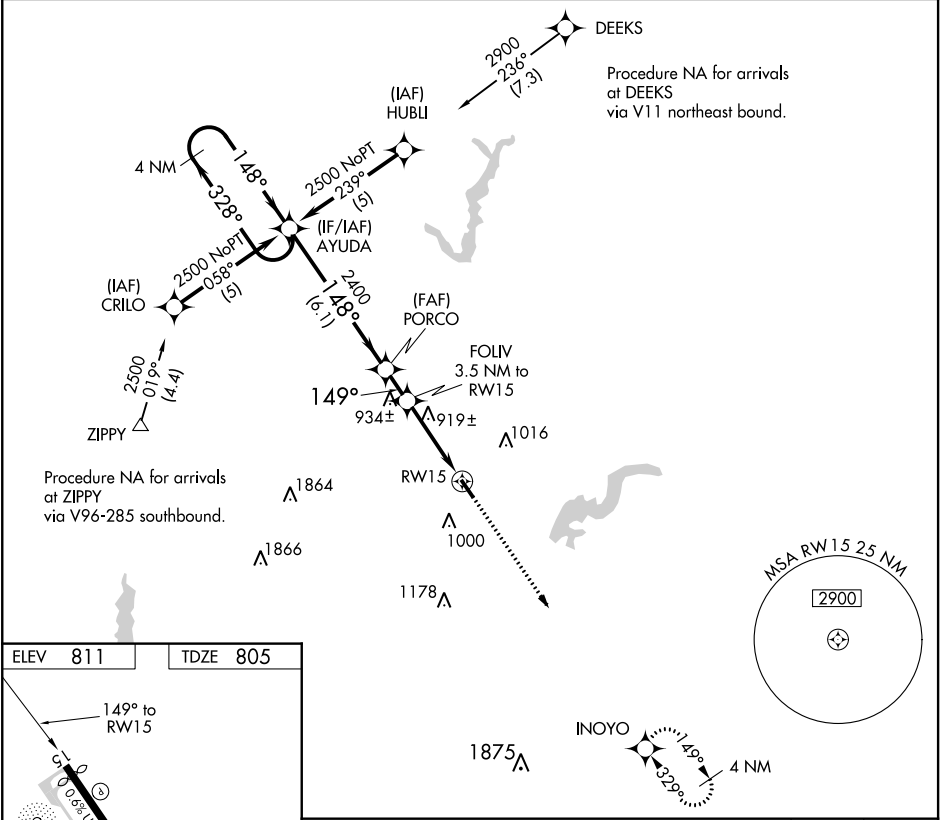
APP CRS	Rwy Idg	<b>3848</b>
<b>149°</b>	TDZE	<b>805</b>
	Apt Elev	<b>811</b>

# RNAV (GPS) RWY 15

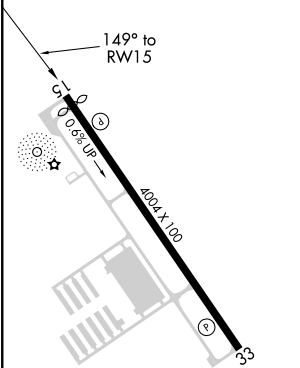
INDIANAPOLIS METROPOLITAN (UMP)

<p><b>▽</b> DME/DME RNP-0.3 NA. VDP NA when using Indianapolis Intl altimeter setting. When local altimeter setting is not received, use Indianapolis Intl altimeter setting and increase all MDA 60 feet and LNAV Cat C visibility ¼ mile.</p> <p><b>▲</b> NA Rwy 15 helicopter visibility reduction below ¼ SM NA</p>	<p><b>MISSED APPROACH:</b> Climb to 2900 direct INOYO and hold.</p>
---	---

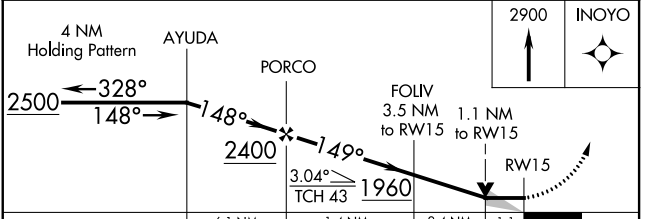
<p>AWOS-3 <b>119.375</b></p>	<p>INDIANAPOLIS APP CON <b>127.15 317.8</b></p>	<p>CLNC DEL <b>121.625</b></p>	<p>UNICOM <b>123.0</b> (CTAF) <b>0</b></p>
----------------------------------	---	------------------------------------	--



ELEV	811	TDZE	805
------	-----	------	-----



MIRL Rwy 15-33 **0**  
REIL Rwy 15 and 33 **0**



CATEGORY	A	B	C	D
LNAV MDA	1180-1 375 (400-1)			NA
CIRCLING	1320-1 509 (600-1)	1340-1 529 (600-1)	1340-1½ 529 (600-1½)	NA

EC-2, 11 OCT 2018 to 08 NOV 2018

EC-2, 11 OCT 2018 to 08 NOV 2018