

WAAS CH 61234 W23A	APP CRS 232°	Rwy Idg TDZE 1523 Apt Elev 1545	5506
--	------------------------	---	-------------

RNAV (GPS) RWY 23

SCOTT MUNI (SCX)

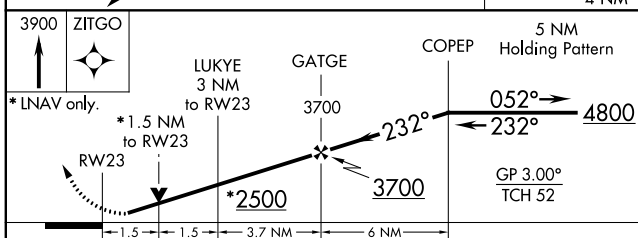
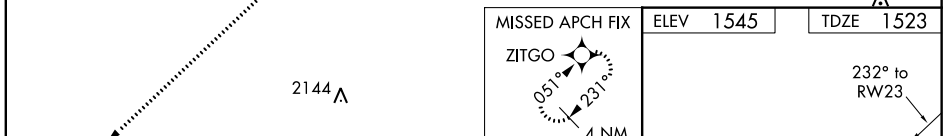
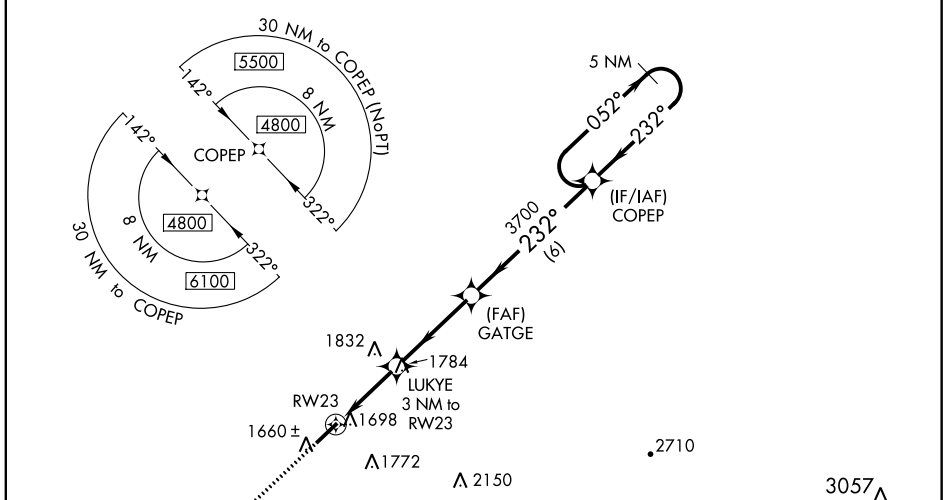
⚠ **⚠** **NA**

Night landing: Rwy 5 NA. For uncompensated Baro-VNAV systems, LNAV/VNAV NA below -18°C (0°F) or above 54°C (130°F). DME/DME RNP-0.3 NA. When local altimeter setting not received, use Monticello altimeter setting: increase LPV all Cats DA to 2005 feet, LNAV/VNAV all Cats DA to 2153 feet, LPV visibility ½ mile, LNAV/VNAV ⅝ mile; increase all MDA 240 feet and LNAV Cat C/D visibility ⅝ mile, Circling Cat B ¼ mile, Circling Cat C 1 mile and Circling Cat D ¾ mile. Inop table does not apply to LPV and LNAV all Cats. For inop ODALS, increase LNAV/VNAV Cat D visibility to 1⅜ mile. For inop ODALS when using Monticello altimeter setting, increase LPV all Cats visibility to 1⅝ mile, LNAV/VNAV all Cats to 2½ mile. When using Monticello altimeter setting, inop table does not apply to LNAV Cats A/C/D. VDP and Baro-VNAV NA when using Monticello altimeter setting.

ODALS

MISSED APPROACH:
Climb to 3900 direct ZITGO and hold.

AWOS-3 135.025	INDIANAPOLIS CENTER 124.625 371.925	UNICOM 122.8 (CTAF)
--------------------------	---	-------------------------------



MISSED APCH FIX ZITGO	ELEV 1545	TDZE 1523
3900 ZITGO		
*LNAV only.		
RW23	LUKYE 3 NM to RW23	GATGE 3700
1.5 NM	1.5 NM	3.7 NM
2500	3700	4800
232°	232°	052°
GP 3.00° TCH 52		
5 NM Holding Pattern		
5506.775	0.4% UP	

CATEGORY	A	B	C	D
LPV DA		1773-1	250 (300-1)	
LNAV/DA/VNAV		1921-1⅝	398 (400-1⅝)	
LNAV MDA	2040-1	517 (500-1)	2040-1⅜	517 (500-1⅝)
C CIRCLING	2040-1	495 (500-1)	2200-1¾ 655 (700-1¾)	2260-2¼ 715 (800-2¼)

MIRL Rwy 5-23
REIL Rwy 5 and 23

SE-1, 11 OCT 2018 to 08 NOV 2018

SE-1, 11 OCT 2018 to 08 NOV 2018