

WAAS CH 93735 W02A	APP CRS 018°	Rwy Idg TDZE 262 Apt Elev 262	5000 262 262
---------------------------------	------------------------	---	---

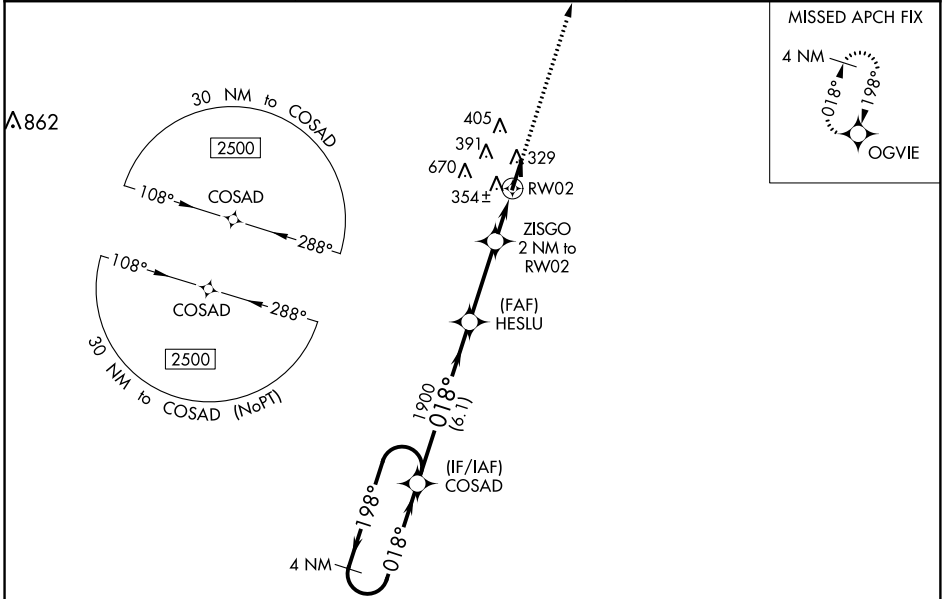
RNAV (GPS) RWY 2

KENNETT MEMORIAL (TKX)

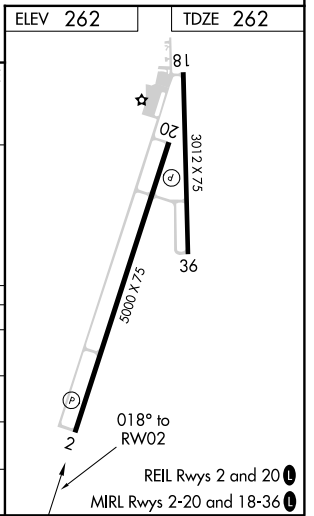
NA Circling to Rwy 18/36 NA at night. For uncompensated Baro-VNAV systems, LNAV/VNAV NA below -16°C (4°F) or above 54°C (130°F). Circling NA west of Rws 2 and 18. DME/DME RNP-0.3 NA. When local altimeter setting not received, use Blytheville altimeter setting and increase all DA 47 feet and all MDA 60 feet; increase LNAV/VNAV visibility all Cats and LNAV Cats C/D visibility 1/8 mile; increase Circling Cat D visibility 1/4 mile. Helicopter visibility reduction below 1 SM NA. Rwy 2 Straight-in and Circling minimums NA at night.

MISSED APPROACH: Climb to 2500 direct OGVIE and hold.

AWOS-3PT 119.05	MEMPHIS CENTER 120.075 289.4	UNICOM 122.8 (CTAF) 0
---------------------------	--	---------------------------------



4 NM Holding Pattern		COSAD		HESLU		ZISGO 2 NM to RWY 2		RWY 2	
2500		198° ←		018° →		1900		*920	
GP 3.00°		TCH 40		6.1 NM		3 NM		2 NM	
CATEGORY	A	B	C	D					
LPV DA		512-1	250 (300-1)						
LNAV/VNAV DA		538-1	276 (300-1)						
LNAV MDA		620-1	358 (400-1)						
CIRCLING	660-1 398 (400-1)	720-1 458 (500-1)	720-1½ 458 (500-1½)	900-2 638 (700-2)					



NC-3, 11 OCT 2018 to 08 NOV 2018

NC-3, 11 OCT 2018 to 08 NOV 2018