

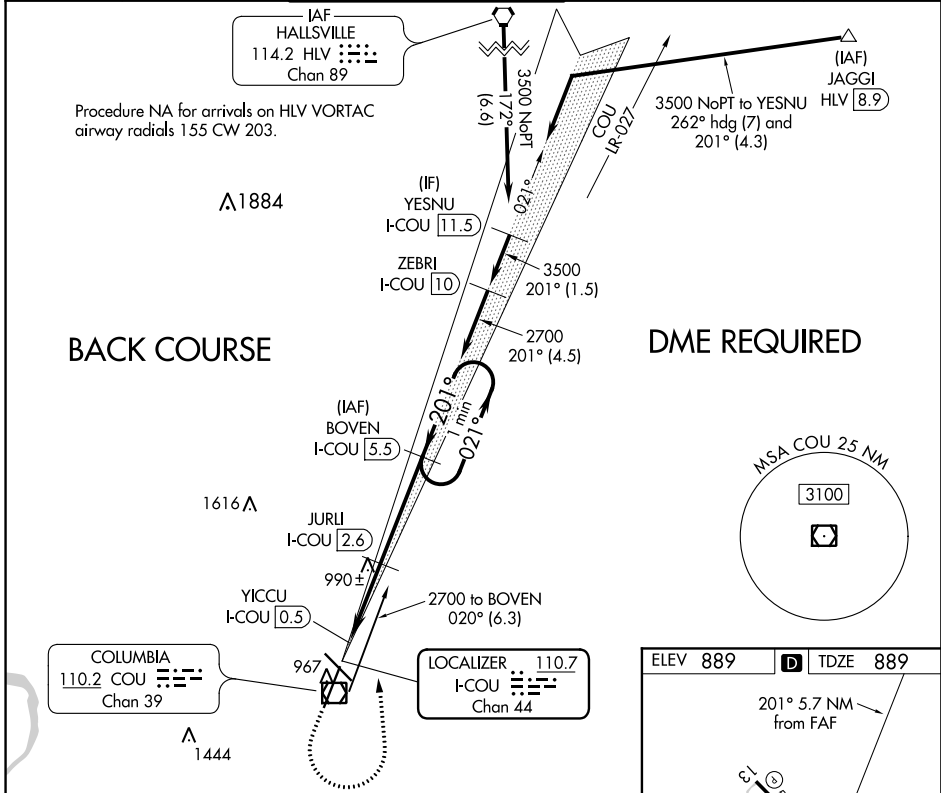
LOC/DME I-COU <b>110.7</b> Chan 44	APP CRS <b>201°</b>	Rwy Idg TDZE Apt Elev	<b>6501</b> <b>889</b> <b>889</b>
--	------------------------	-----------------------------	---

# LOC BC RWY 20

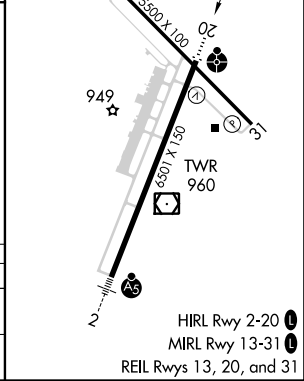
COLUMBIA RGNL (COU)

<b>⚠</b> Circling NA for Cat D west of Rwy 2 and 13. DME required.	ODALS ⚠	MISSED APPROACH: Climb to 1700 then climbing left turn to 2700 on heading 355° and I-COU localizer north course (021°) to BOVEN/I-COU 5.5 DME and hold.
---	------------	---

ATIS <b>128.45</b>	MIZU APP CON <b>124.375 353.7</b>	COLUMBIA TOWER★ <b>119.3 (CTAF) 363.25</b>	COLUMBIA RADIO <b>121.5 243.0 255.4</b>	GND CON <b>121.6</b>
-----------------------	--------------------------------------	---	--	-------------------------



1700	2700	I-COU N crs (021°)	BOVEN I-COU 5.5	BOVEN I-COU 5.5	One Minute Holding Pattern
↑	hdg 355°				
I-COU DME ANTENNA	JURLI I-COU 2.6	2.94° TCH 40	021°	2700	
YICCU I-COU 0.5			201°		
	1800				Disregard GS indications.
	0.7	2.1 NM	2.9 NM		
CATEGORY	A	B	C	D	
S-LOC 20	1240-3/4	351 (400-3/4)	1240-7/8	351 (400-7/8)	
CIRCLING	1300-1 411 (500-1)	1340-1 451 (500-1)	1340-1 1/2 451 (500-1 1/2)	1440-2 551 (600-2)	



NC-3, 11 OCT 2018 to 08 NOV 2018

NC-3, 11 OCT 2018 to 08 NOV 2018