


LOC I-GKJ <b>108.5</b>	APP CRS <b>249°</b>	Rwy Idg TDZE Apt Elev	<b>5001</b> <b>1399</b> <b>1399</b>
---------------------------	------------------------	-----------------------------	---

# LOC RWY 25

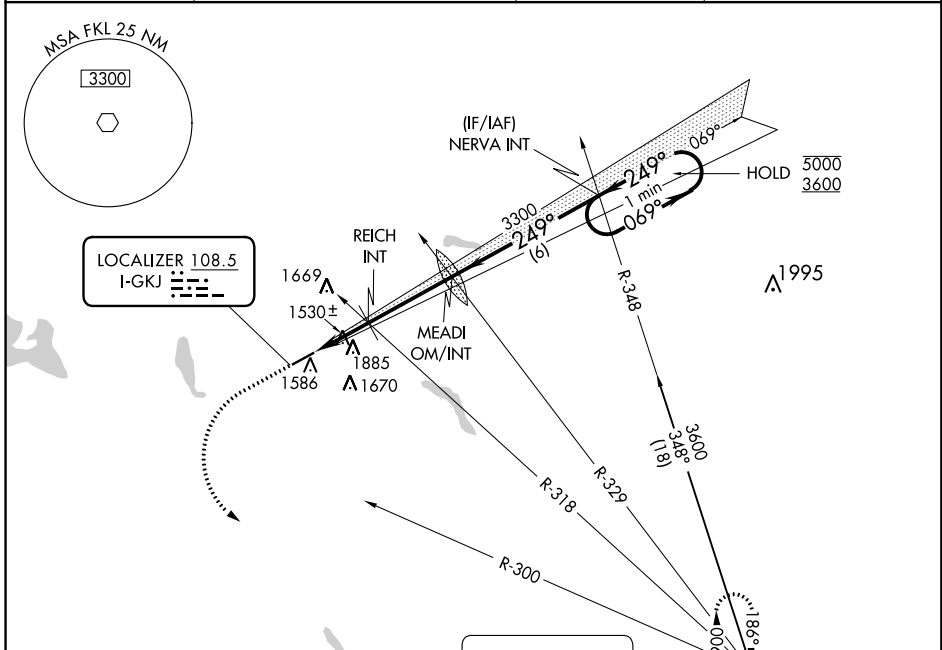
PORT MEADVILLE (GKJ)

**RADAR required.**

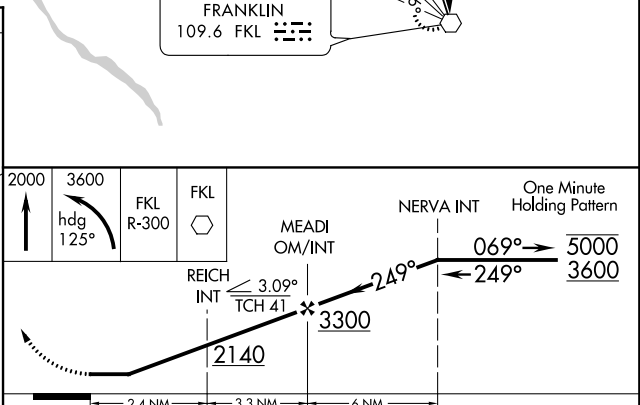
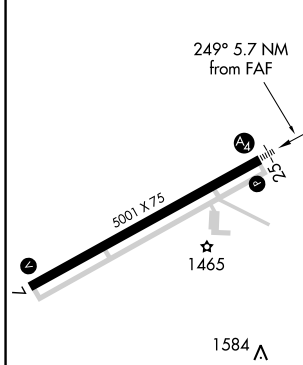
⚠ Inop table does not apply.  
 ⚠ Rwy 25 helicopter visibility reduction below 3/4 SM NA.

MALS  MISSED APPROACH: Climb to 2000 then climbing left turn to 3600 on heading 125° and FKL VOR R-300 to FKL VOR and hold.

ASOS <b>121.425</b>	YOUNGSTOWN APP CON * <b>133.95 322.3</b>	CLNC DEL <b>124.95</b>	UNICOM <b>123.0 (CTAF)</b>
------------------------	---	---------------------------	-------------------------------



ELEV 1399	TDZE 1399
-----------	-----------



CATEGORY	A	B	C	D
S-LOC 25	1780-1	381 (400-1)	1780-1 7/8	381 (400-1 7/8)
CIRCLING	1900-1 501 (600-1)	2240-1 1/4 841 (900-1 1/4)	2240-2 1/2 841 (900-2 1/2)	2240-2 3/4 841 (900-2 3/4)

NE-4, 11 OCT 2018 to 08 NOV 2018

NE-4, 11 OCT 2018 to 08 NOV 2018