

APP CRS	Rwy Idg	5342
089°	TDZE	379
	Apt Elev	388

RNAV (GPS) RWY 9L

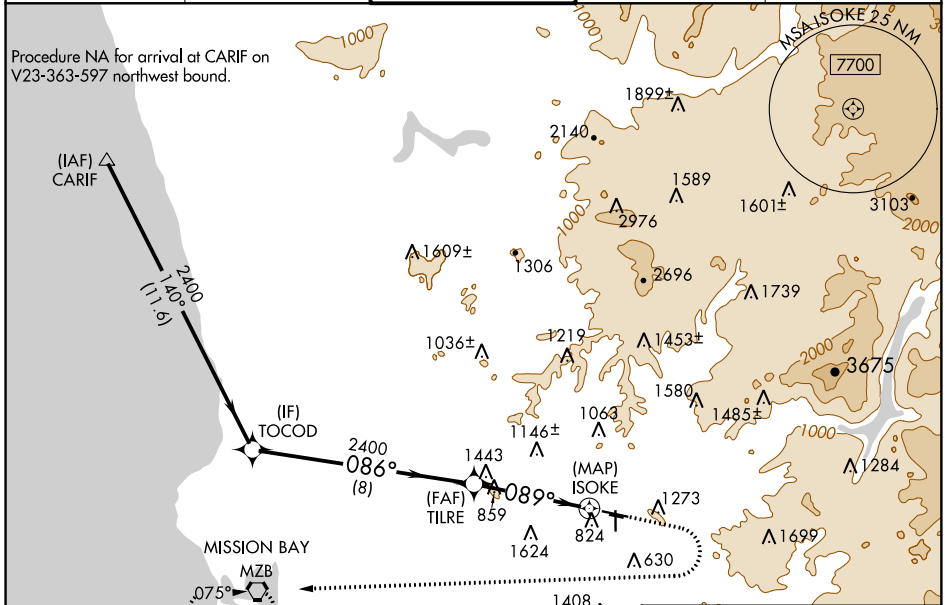
GILLESPIE FIELD (SEE)

RNP APCH

▽ For uncompensated Baro-VNAV systems, LNAV/VNAV NA below 5°C (41°F) or above 14°C (57°F). Circling NA northeast of Rwy 17 and 27R. Circling Rwy 17, 27L, 27R, 35 NA at night. Rwy 9L helicopter visibility reduction below 1 SM NA.

MISSED APPROACH: Climb to 1900 then climbing right turn to 2700 direct MZB VORTAC and hold.

ATIS 125.45	SOCAL APP CON 124.35 279.625	GILLESPIE TOWER* 120.7 (CTAF) 257.8	GND CON 121.7	CLNC DEL 125.1
-----------------------	--	---	-------------------------	--------------------------

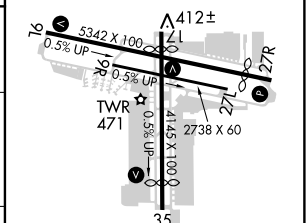
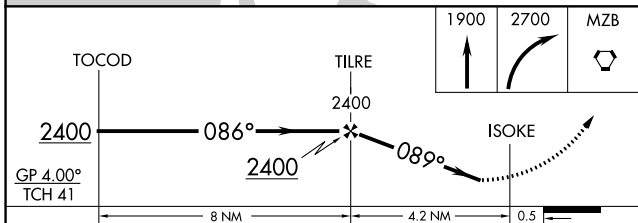


SW-3, 11 OCT 2018 to 08 NOV 2018

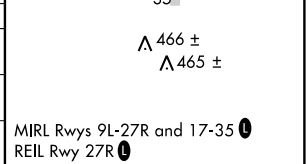
SW-3, 11 OCT 2018 to 08 NOV 2018



ELEV 388	TDZE 379
----------	----------



CATEGORY	A	B	C	D
LNAV/VNAV DA	1350-3	971 (1000-3)		NA
LNAV MDA	1720-1¼ 1341 (1400-1¼)	1720-1½ 1341 (1400-1½)		NA
C CIRCLING	1720-1¼ 1332 (1400-1¼)	1720-1½ 1332 (1400-1½)		NA



MIRL Rwy 9L-27R and 17-35
REIL Rwy 27R