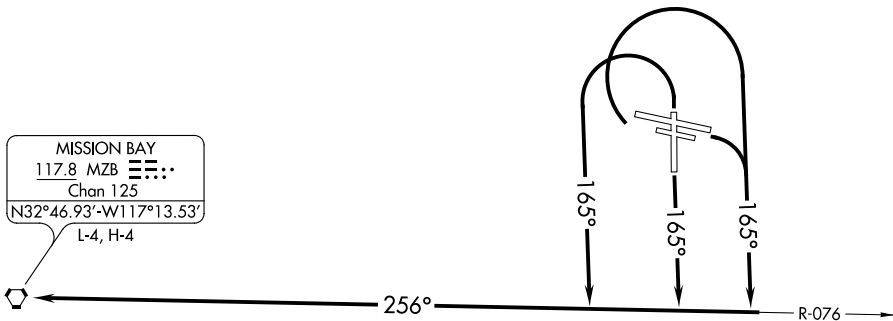


# MISSION BAY ONE DEPARTURE (OBSTACLE)

GILLESPIE FIELD (S'E'E)  
SAN DIEGO/EL CAJON, CALIFORNIA

GILLESPIE TOWER ★  
120.7 257.8  
SOCAL DEP CON  
124.35 279.625

MISSION BAY  
117.8 MZH  
Chan 125  
N32°46.93'-W117°13.53'  
L-4, H-4



SW-3, 11 OCT 2018 to 08 NOV 2018

SW-3, 11 OCT 2018 to 08 NOV 2018

### TAKEOFF MINIMUMS

- Rwy 9R: 900-2¾ with minimum climb of 405' per NM to 3600, or 4400-3 for VCOA.
- Rwy 9L: 900-2¾ with minimum climb of 400' per NM to 3600, or 4400-3 for VCOA.
- Rwy 17: Standard with minimum climb gradient of 480' per NM to 2200, or 4400-3 for VCOA.
- Rwy 27L: Standard with minimum climb gradient of 600' per NM to 2200, or 4400-3 for VCOA.
- Rwy 27R: Standard with minimum climb gradient of 645' per NM to 2200, or 4400-3 for VCOA.
- Rwy 35: Standard with minimum climb gradient of 440' per NM to 2000, or 4400-3 for VCOA.

(NOTES CONTINUED ON FOLLOWING PAGE)

NOTE: Chart not to scale.

### DEPARTURE ROUTE DESCRIPTION

TAKEOFF RUNWAYS 9L/R, 27L/R: Climbing right turn on heading 165°. Thence. . . .

TAKEOFF RUNWAY 17: Climb on heading 165°. Thence. . . .

TAKEOFF RUNWAY 35: Climbing left turn on heading 165°. Thence. . . .

. . . .on MZH R-076 to MZH VORTAC.

ALL RUNWAYS: Obtain ATC approval for VCOA when requesting IFR clearance.

Climb in visual conditions to cross Gillespie Field Airport at or above 4600 before proceeding on assigned route of flight.