

(WLSTN7.WLSTN) 17229

# WLSTN SEVEN DEPARTURE

ANOKA COUNTY-BLAINE (JANES FIELD) (ANE)

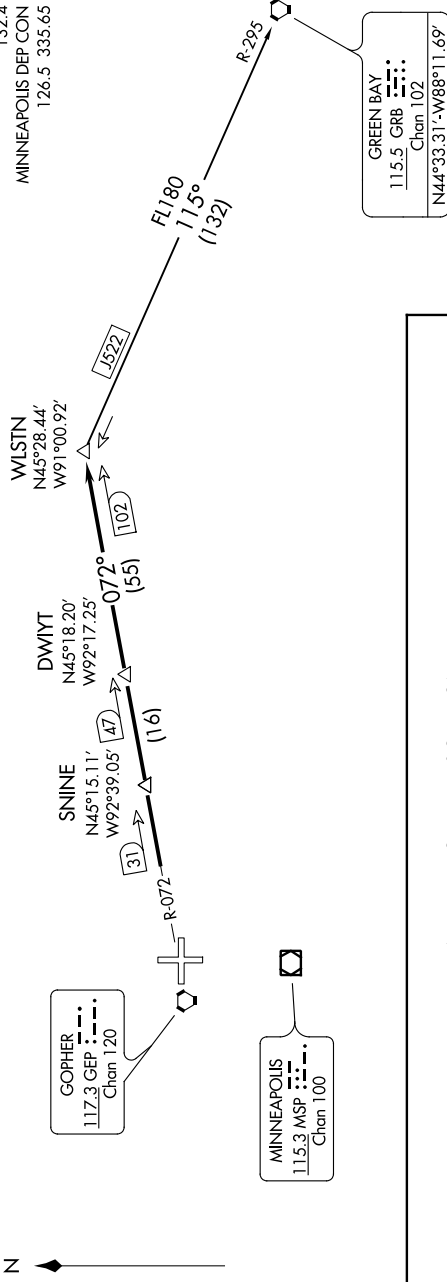
AL-5202 (FAA)

MINNEAPOLIS, MINNESOTA

ATIS  
120.625  
CLNC DEL  
121.3  
MINNEAPOLIS CLNC DEL  
121.85 (when tower closed)  
ANOKA TOWER\*  
132.4  
MINNEAPOLIS DEP CON  
126.5 335.65

**TOP ALTITUDE:  
(JETS) 7000/  
(PROPS) 5000**

**TAKEOFF MINIMUMS**  
Rwy 9: Standard with minimum climb of 341' per NM to 3000.  
Rwy 18: Standard with minimum climb of 371' per NM to 3000.  
Rwy 27: Standard with minimum climb of 259' per NM to 2800.  
Rwy 36: Standard with minimum climb of 259' per NM to 2800.



## DEPARTURE ROUTE DESCRIPTION

**TAKEOFF ALL RUNWAYS:** Fly assigned heading and altitude for RADAR vectors to GEP R-072 to WLSTN/GEP 102 DME. Thence . . . .

. . . . on assigned transition or assigned route. Expect clearance to filed altitude/flight level 10 (ten) minutes after departure.

**GREEN BAY TRANSITION (WLSTN7.GRB):** From over WLSTN on GRB R-295 to GRB VORTAC.

**NOTE:** RADAR required.  
**NOTE:** Chart not to scale.

# WLSTN SEVEN DEPARTURE

(WLSTN7.WLSTN) 17AUG17

MINNEAPOLIS, MINNESOTA

ANOKA COUNTY-BLAINE (JANES FIELD) (ANE)