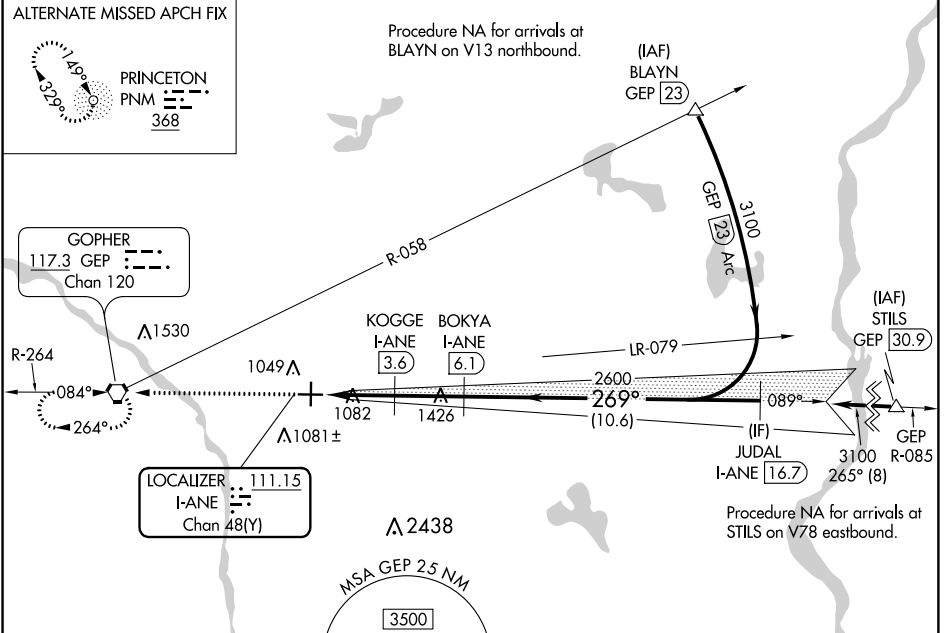


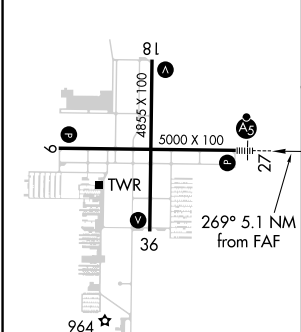
LOC/DME I-ANE 111.15 Chan 48 (Y)	APP CRS 269°	Rwy Idg TDZE Apt Elev	5000 910 912
---	------------------------	-----------------------------	---

ILS or LOC RWY 27
ANOKA COUNTY-BLAINE (JANES FIELD) (A.N.E.)

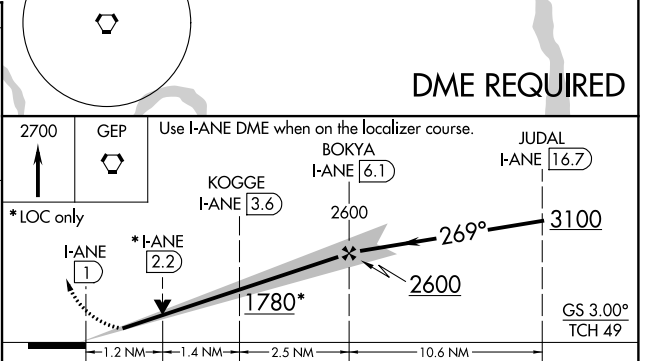
DME required.		MALSR 	MISSED APPROACH: Climb to 2700 direct GEP VORTAC and hold.			
ATIS 120.625	MINNEAPOLIS APP CON 126.5 335.65	ANOKA TOWER* 132.4 (CTAF) 0	GND CON 121.85	CLNC DEL 121.3	MINNEAPOLIS CLNC DEL 121.85 (When tower closed)	UNICOM 122.95



ELEV 912	TDZE 910
----------	----------



HIRL Rwy 9-27	MIRL Rwy 18-36	REIL Rwy 9, 18, and 36
---------------	----------------	------------------------



CATEGORY	A	B	C	D
S-ILS 27	1110-½ 200 (200-½)			
S-LOC 27	1340-½ 430 (500-½)	1340-¾ 430 (500-¾)	1460-1½ 548 (600-1½)	1340-1 430 (500-1)
CIRCLING	1400-1 488 (500-1)			1580-2 668 (700-2)

NC-1, 11 OCT 2018 to 08 NOV 2018

NC-1, 11 OCT 2018 to 08 NOV 2018