

DUBLIN, VIRGINIA

AL-5084 (FAA)

17061

LOC I-PSK 110.9	APP CRS 058°	Rwy Idg TDZE Apt Elev	6201 2105 2105
---------------------------	------------------------	-----------------------------	---

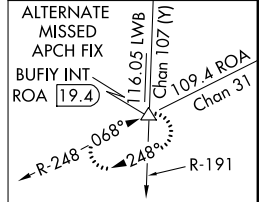
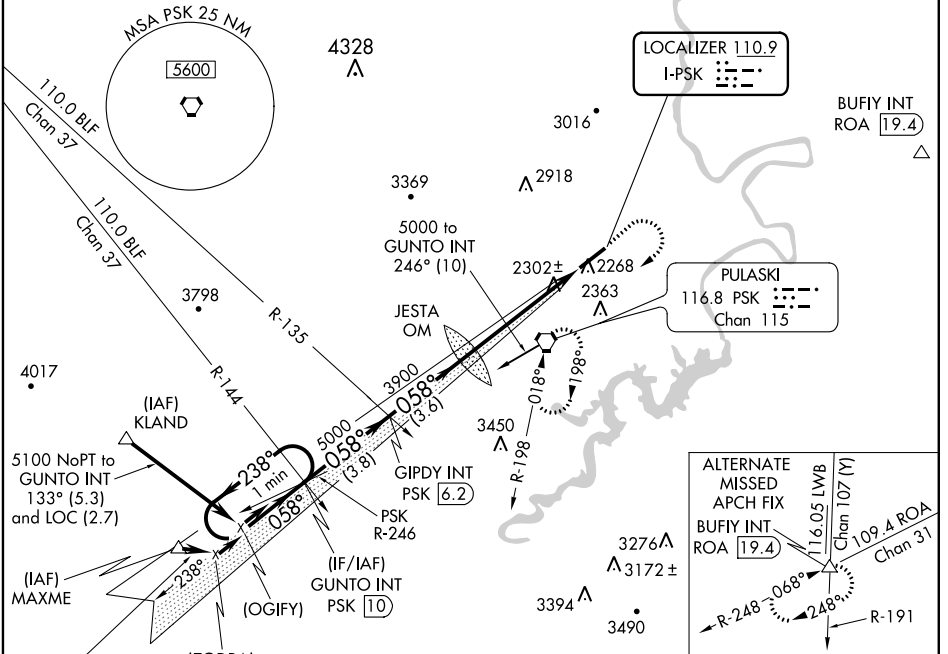
ILS or LOC Z RWY 6

NEW RIVER VALLEY (PSK)

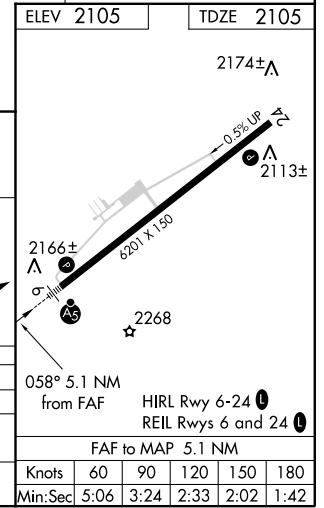
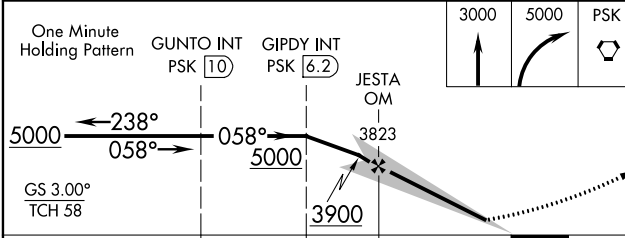
Visibility reduction by helicopters NA. When local altimeter setting not received, use Blacksburg altimeter setting and increase all DA 36 feet, and all MDA 40 feet. Inoperative table does not apply to S-ILS 6 all Cats. and S-LOC 6 Cats. A and B. For inoperative MALSRL, increase S-LOC 6 Cat. C visibility to 1 1/4 mile.

MALSRL MISSED APPROACH: Climb to 3000 then climbing right turn to 5000 direct PSK VORTAC and hold.

AWOS-3 127.375	ROANOKE APP CON 126.0 339.8	ROANOKE CLNC DEL 121.7	UNICOM 122.7 (CTAF)
--------------------------	---------------------------------------	----------------------------------	-------------------------------



ELEV 2105	TDZE 2105
-----------	-----------



CATEGORY	A	B	C	D
S-ILS 6		2305-1	200 (200-1)	
S-LOC 6		2560-1	455 (500-1)	
CIRCLING	2620-1	515 (600-1)	2620-1 1/2 515 (600-1 1/2)	2680-2 575 (600-2)

FAF to MAP 5.1 NM					
Knots	60	90	120	150	180
Min:Sec	5:06	3:24	2:33	2:02	1:42

DUBLIN, VIRGINIA
Amdt 5 30JUN11

37°08'N - 80°41'W

NEW RIVER VALLEY (PSK)

ILS or LOC Z RWY 6

NE-3, 11 OCT 2018 to 08 NOV 2018

NE-3, 11 OCT 2018 to 08 NOV 2018