

# PETTE ONE ARRIVAL (RNAV)

PONTIAC, MICHIGAN

ANN ARBOR MUNI ATIS  
134.55  
BISHOP INTL ATIS  
133.15  
COLEMAN A YOUNG MUNI ATIS  
124.875  
OAKLAND COUNTY INTL ATIS  
125.025  
WILLOW RUN ATIS  
127.425  
SELFRIDGE ANGB ATIS  
125.325 270.1  
DETROIT APP CON  
118.95 284.0

LIVINGSTON COUNTY  
SPENCER J HARDY

BISHOP  
INTL

OAKLAND  
COUNTY  
INTL

SELFRIDGE  
ANGB

OAKLAND/  
TROY

COLEMAN A  
YOUNG MUNI

WINDSOR

WILLOW  
RUN

GROSSE  
ILE  
MUNI

CLUSTER

Ldg all Airports

SYREN  
4000

FOLLO

PETTE

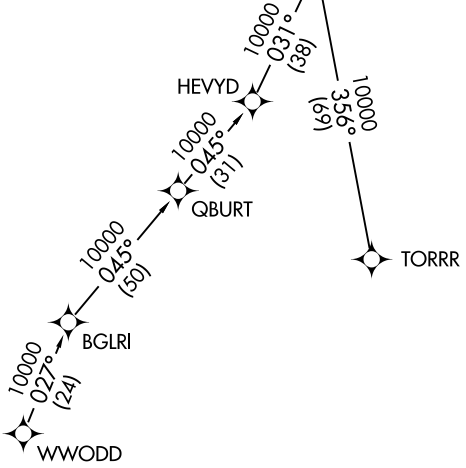
HOSSA

HAZIT

HEVYD

QBURT

TORRR



NOTE: RADAR required.  
 NOTE: RNAV 1.  
 NOTE: DME/DME/IRU or GPS required.

NOTE: Chart not to scale.

## ARRIVAL ROUTE DESCRIPTION

HOSSA TRANSITION (HOSSA.PETTE1):  
 TORRR TRANSITION (TORRR.PETTE1):  
 WWODD TRANSITION (WWODD.PETTE1):

LANDING ALL AIRPORTS: From PETTE on track 056° to FOLLO, then on track 056° to cross SYREN at or above 4000, then on track 055°. Expect RADAR vectors to final approach course.

# PETTE ONE ARRIVAL (RNAV)

PONTIAC, MICHIGAN

EC-1, 11 OCT 2018 to 08 NOV 2018

EC-1, 11 OCT 2018 to 08 NOV 2018