

|  |                        |  |
|--|------------------------|--|
| WAAS<br>CH <b>77704</b><br><b>W23A</b> | APP CRS<br><b>230°</b> | Rwy ldg <b>11500</b><br>TDZE <b>87</b><br>Apt Elev <b>93</b> |
|--|------------------------|--|

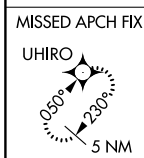
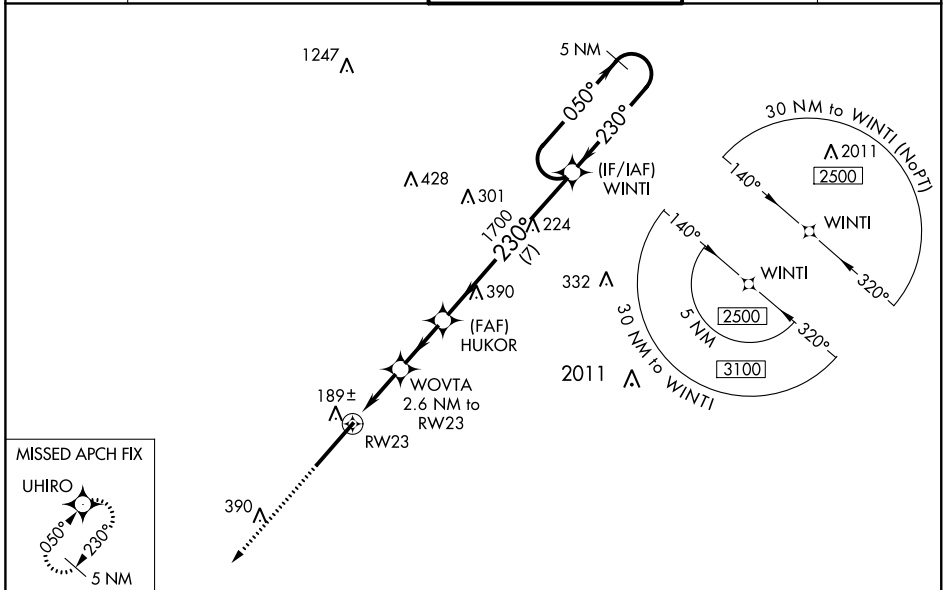
# RNAV (GPS) RWY 23

KINSTON RGNL JETPORT AT STALLINGS FIELD (ISO)

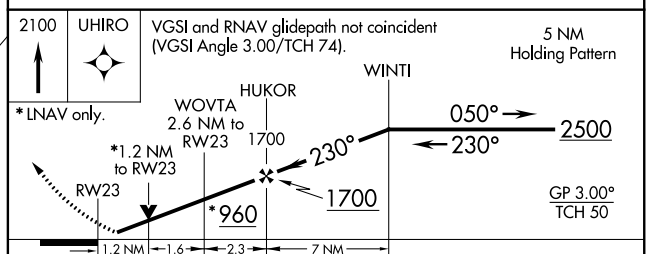
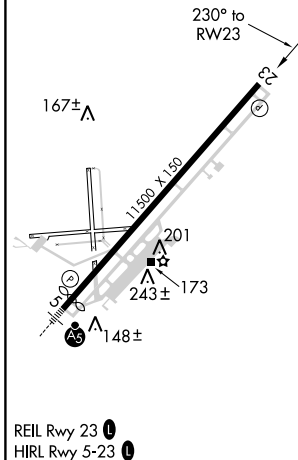
**▽** Baro-VNAV NA when using Seymour Johnson AFB altimeter setting. For uncompensated Baro-VNAV systems, LNAV/VNAV NA below -15°C (5°F) or above 54°C (130°F). DME/DME RNP-0.3 NA.  
**⚠** VDP NA with Seymour Johnson AFB altimeter setting. Rwy 23 helicopter visibility reduction below ¼ SM NA. When local altimeter setting not received, use Seymour Johnson AFB altimeter setting and increase LPV DA to 432, LNAV/VNAV DA to 413, and all MDA 60 feet. Increase LPV all Cats and LNAV Cats C and D visibility ¼ mile, and increase LNAV/VNAV all Cats and Circling Cat D visibility ¼ mile.

**MISSED APPROACH:**  
Climb to 2100 direct UHIRO and hold.

|                         |   |   |                         |                         |
|-------------------------|---|---|-------------------------|-------------------------|
| AWOS-3<br><b>132.75</b> | SEYMOUR JOHNSON APP CON *<br><b>127.3 273.6</b> | KINSTON TOWER *<br><b>120.6 (CTAF) 335.55</b> | GND CON<br><b>121.9</b> | UNICOM<br><b>122.95</b> |
|-------------------------|---|---|-------------------------|-------------------------|



|                |                |
|----------------|----------------|
| ELEV <b>93</b> | TDZE <b>87</b> |
|----------------|----------------|



| CATEGORY          | A                   | B                   | C                 | D |
|-------------------|---------------------|---------------------|-------------------|---|
| LPV DA            | 390-1 303 (300-1)   |                     |                   |   |
| LNAV/VNAV DA      | 437-1½ 350 (400-1½) |                     |                   |   |
| LNAV MDA          | 540-1 453 (500-1)   | 540-1¾ 453 (500-1¾) |                   |   |
| <b>C</b> CIRCLING | 580-1 487 (500-1)   | 700-1¾ 607 (700-1¾) | 740-2 647 (700-2) |   |

SE-2, 11 OCT 2018 to 08 NOV 2018

SE-2, 11 OCT 2018 to 08 NOV 2018