

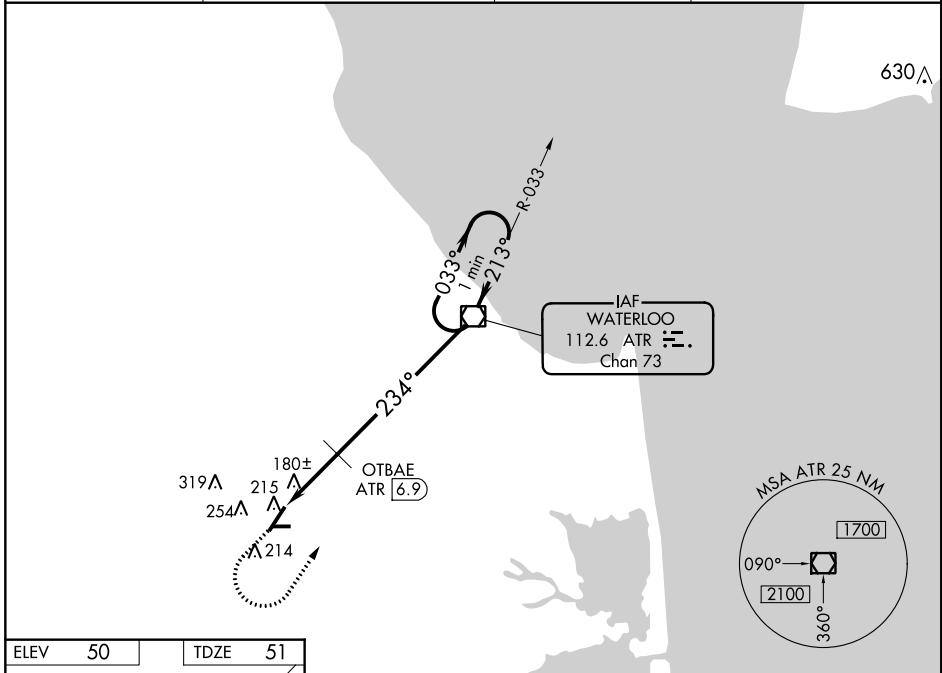
| | | |
|---|------------------------|---|
| VOR/DME ATR 112.6 Chan 73 | APP CRS 234° | Rwy ldg 5331 TDZE 51 Apt Elev 50 |
|---|------------------------|---|

VOR RWY 22
DELAWARE COASTAL (GED)

▼ When local altimeter setting not received, use Salisbury altimeter setting and increase all MDA 60 feet; increase S-22 and Circling Cats C/D visibility ¼ mile;
 ▲ OTBAE fix minimums increase S-22 and Circling Cats C/D visibility ¼ mile.
 Circling Rwy 10, 28 NA at night.

MISSED APPROACH: Climb to 800 then climbing left turn to 3000 direct ATR VOR/DME and hold.

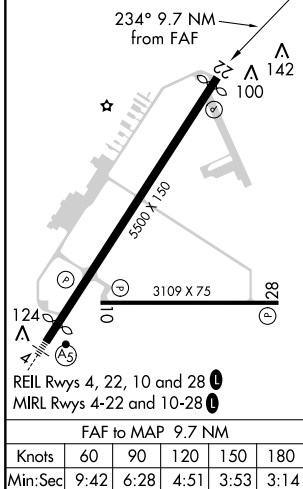
| | | | |
|------------------------|---|---------------------------|---------------------------------|
| ASOS 118.375 | DOVER APP CON 132.425 257.875 | CLNC DEL 125.55 | UNICOM 123.0 (CTAF) 0 |
|------------------------|---|---------------------------|---------------------------------|



NE-3, 11 OCT 2018 to 08 NOV 2018

NE-3, 11 OCT 2018 to 08 NOV 2018

| | |
|---------|---------|
| ELEV 50 | TDZE 51 |
|---------|---------|



| | | | | |
|--------------------|----------------------|----------------------|---|----------------------|
| 800 | 3000 | ATR | One Minute Holding Pattern | |
| ATR VOR/DME | ATR 9.7 | OTBAE ATR 6.9 | ATR 8.6 | |
| 234° | 033° | 213° | 3000 | |
| 680* | 2.83° TCH 52 | 6.9 NM | * 740 when using Salisbury altimeter setting. | |
| CATEGORY | A | B | C | D |
| S-22 | 680-1 | 629 (700-1) | 680-1¾ | 629 (700-1¾) |
| CIRCLING | 680-1 | 630 (700-1) | 720-1¾ 670 (700-1¾) | 720-2 670 (700-2) |
| OTBAE FIX MINIMUMS | | | | |
| S-22 | 440-1 | 389 (400-1) | 440-1½ | 389 (400-1½) |
| CIRCLING | 560-1 510 (600-1) | 580-1 530 (600-1) | 720-1¾ 670 (700-1¾) | 720-2 670 (700-2) |