

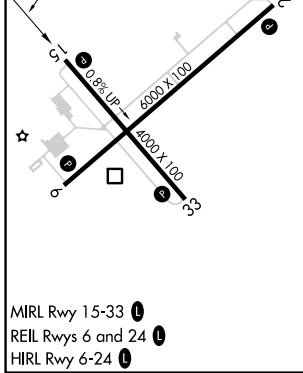
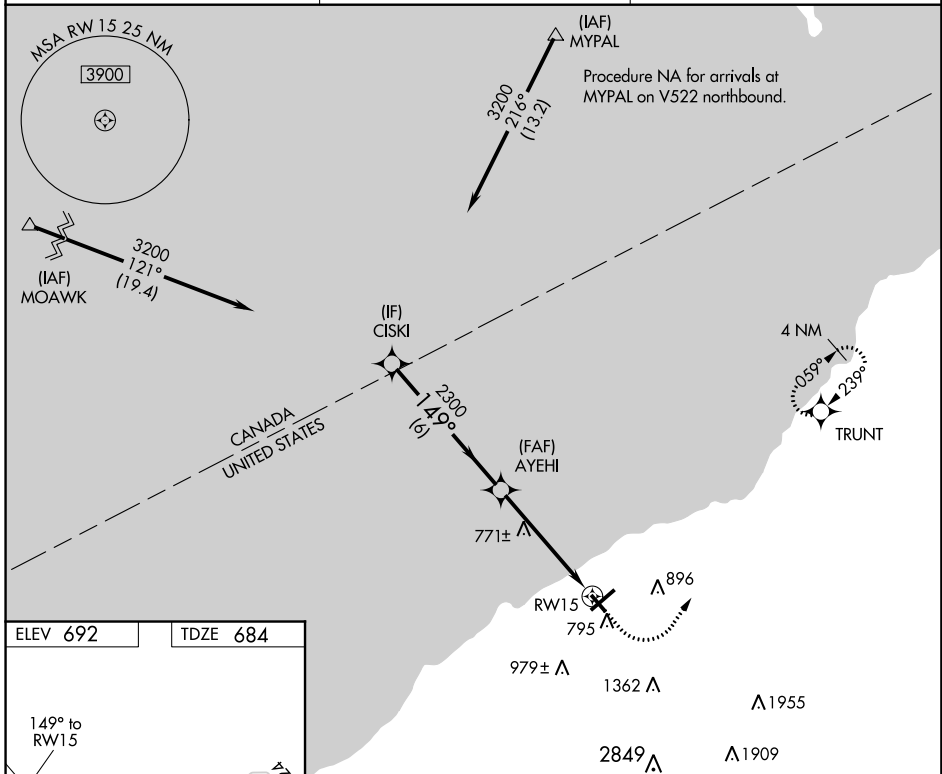
APP CRS 149°	Rwy Idg TDZE Apt Elev	4000 684 692
------------------------	-----------------------------	---

RNAV (GPS) RWY 15

CHAUTAUQUA COUNTY/DUNKIRK (DKK)

<p>DME/DME RNP-0.3 NA. Rwy 15 helicopter visibility reduction below 3/4 SM NA. Circling Rwy 6, 24, 33 NA at night.</p>	<p>MISSED APPROACH: Climb to 1100 then climbing left turn to 3200 direct TRUNT and hold.</p>
--	--

ASOS 119.275	BUFFALO APP CON 126.5 317.6	UNICOM 123.075 (CTAF) 0
------------------------	---------------------------------------	-----------------------------------



CATEGORY	A	B	C	D
LNAV MDA	1060-1 376 (400-1)			
CIRCLING	1200-1 508 (600-1)	1300-1 608 (700-1)	1640-2 3/4 948 (1000-2 3/4)	2140-3 1448 (1500-3)

NE-2, 11 OCT 2018 to 08 NOV 2018

NE-2, 11 OCT 2018 to 08 NOV 2018