

WAAS CH 53302 W04A	APP CRS 042°	Rwy Idg 5997 TDZE 3374 Apt Elev 3374
--	------------------------	---

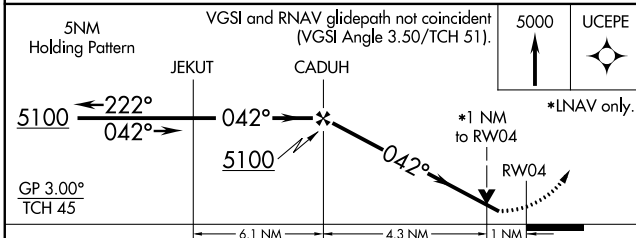
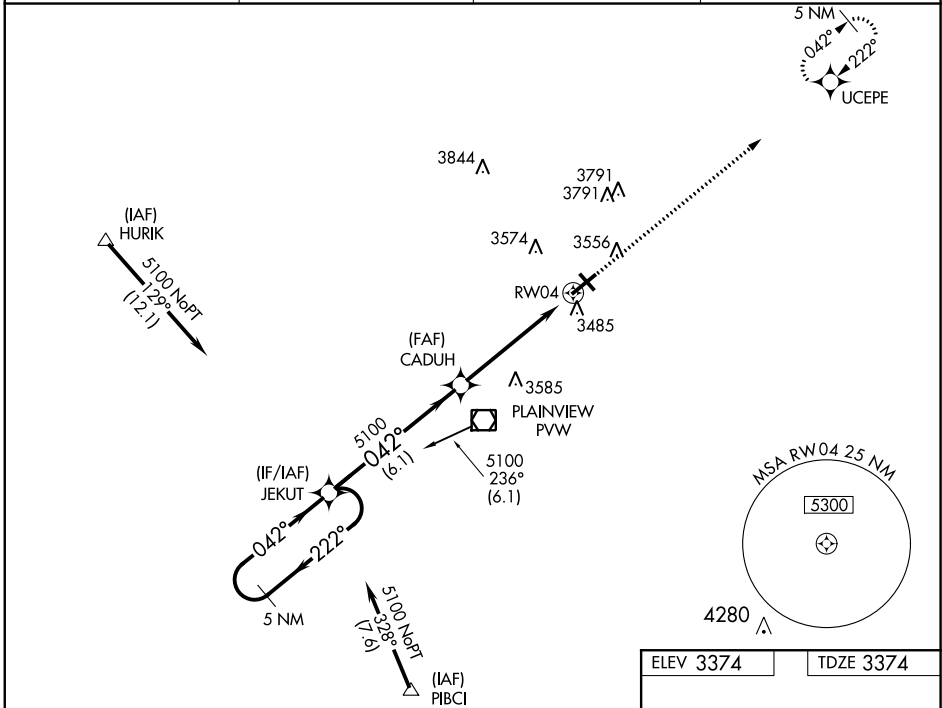
RNAV (GPS) RWY 4

HALE COUNTY (PWV)

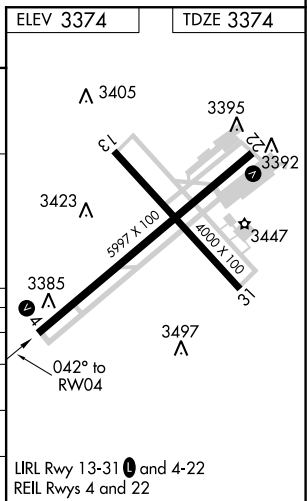
⚠ DME/DME RNP-0.3 NA. For uncompensated Baro-VNAV systems, LNAV/VNAV NA below -21°C (-5°F) or above 42°C (108°F). If local altimeter setting not received, use Lubbock altimeter setting and increase all DAs/MDAs 100 feet. VDP and Baro-VNAV NA when using Lubbock altimeter setting. Helicopter visibility reduction below 3/4 SM NA. When local altimeter setting is not received, use Lubbock altimeter setting; increase all DA 83 feet and increase all LPV and LNAV/VNAV visibility 1/4 mile, increase all MDA 100 feet and LNAV Cat C/D and Circling Cat C visibility 1/4 mile.

⚠ MISSED APPROACH: Climb to 5000, direct UCEPE and hold.

ASOS 119.675	LUBBOCK APP CON 119.2 351.8	CLNC DEL 121.7	UNICOM 123.0 (CTAF) 0
------------------------	---------------------------------------	--------------------------	---------------------------------



CATEGORY	A	B	C	D
LPV DA		3624-1	250 (300-1)	
LNAV/ VNAV DA		3730-1 1/4	356 (400-1 1/4)	
LNAV MDA	3800-1	426 (500-1)	3800-1 1/4	426 (500-1 1/4)
CIRCLING	3920-1 1/4 546 (600-1 1/4)	3940-1 1/4 566 (600-1 1/4)	3940-1 1/2 566 (600-1 1/2)	3940-2 566 (600-2)



SC-2, 11 OCT 2018 to 08 NOV 2018

SC-2, 11 OCT 2018 to 08 NOV 2018