

(FISEL.FISEL7) 17173

FISEL SEVEN ARRIVAL (RNAV)

AL-744 (FAA)

FORT LAUDERDALE, FLORIDA

NOTE: RADAR required.
 NOTE: RNAV 1.
 NOTE: DME/DME/IRU or GPS required.
 NOTE: Turbojet aircraft only.

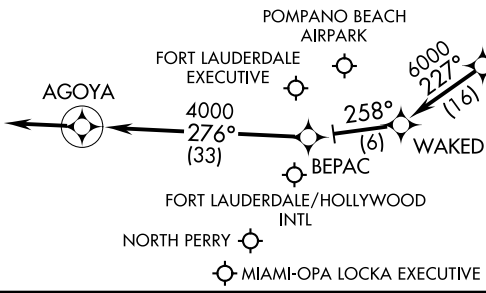
MIAMI APP CON 133.775 285.6
 FORT LAUDERDALE/HOLLYWOOD INTL D-ATIS 135.0
 MIAMI-OPA LOCKA EXECUTIVE ATIS 125.9
 FORT LAUDERDALE EXECUTIVE ATIS 119.85
 POMPANO BEACH AIRPARK ATIS 120.55
 NORTH PERRY ATIS 135.475

NOTE: Treasure transition: ATC assigned only.

ARRIVAL ROUTE DESCRIPTION

- CRANS TRANSITION (CRANS.FISEL7)
- FREEPORT TRANSITION (ZFP.FISEL7)
- MELBOURNE TRANSITION (MLB.FISEL7)
- ORMOND BEACH TRANSITION (OMN.FISEL7)
- TREASURE TRANSITION (TRV.FISEL7)

From FISEL on track 227° to WAKED, then on track 258° to BEPAC, then on track 276° to AGOYA, then on 276° heading or as assigned by ATC. Expect RADAR vectors.



NOTE: Landing FXE, HWO, OPF, PMP: Expect RADAR vectors prior to WAKED.
 NOTE: FLL Landing West: Expect RADAR vectors to final approach course after FISEL.
 NOTE: FLL Landing East: Expect RADAR vectors to final approach course prior to AGOYA.

NOTE: Chart not to scale.

FISEL SEVEN ARRIVAL (RNAV)

(FISEL.FISEL7) 22JUN17

FORT LAUDERDALE, FLORIDA

SE-3, 11 OCT 2018 to 08 NOV 2018

SE-3, 11 OCT 2018 to 08 NOV 2018