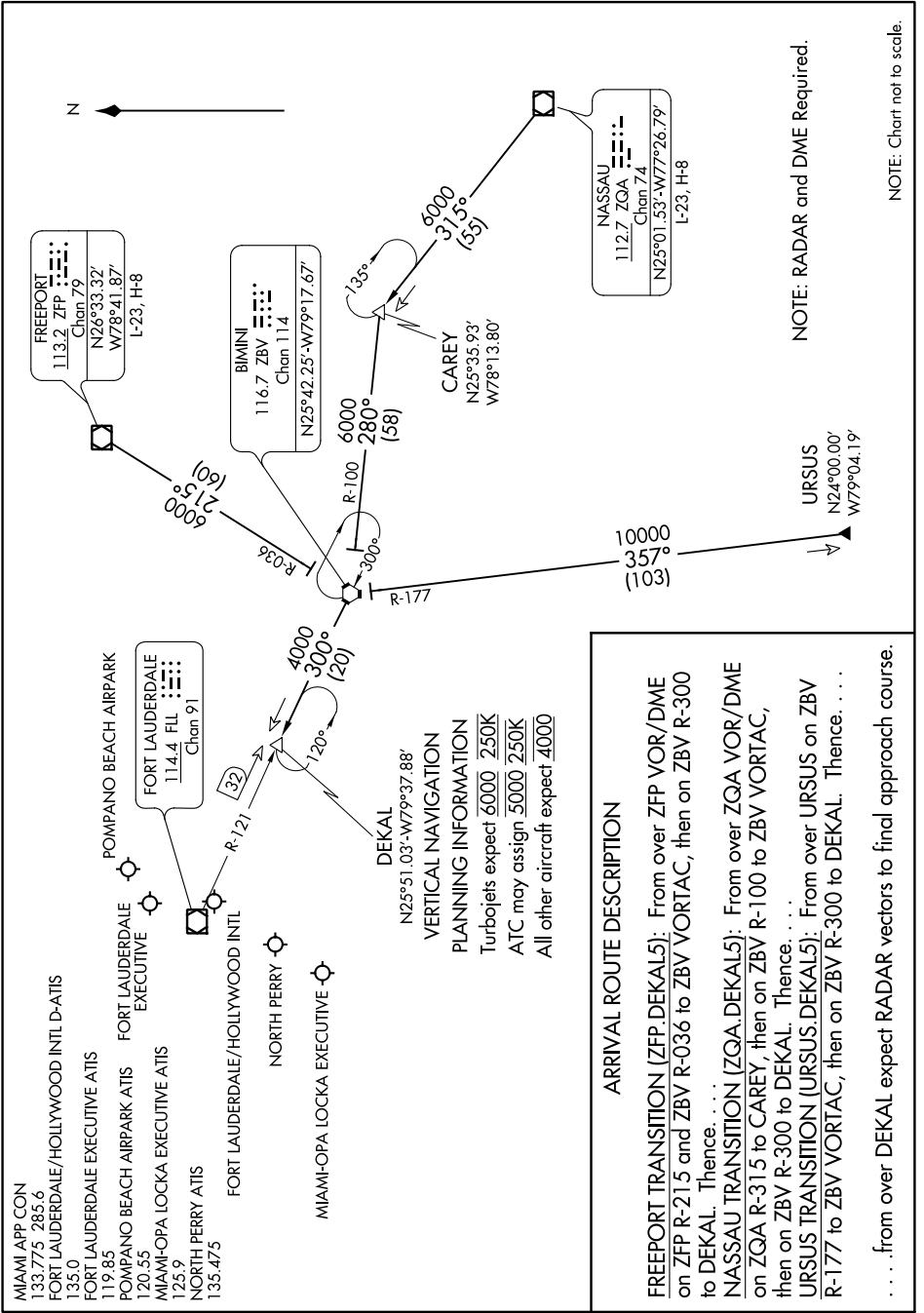


SE-3, 11 OCT 2018 to 08 NOV 2018



NOTE: Chart not to scale.

NOTE: RADAR and DME Required.

ARRIVAL ROUTE DESCRIPTION

FREEPORT TRANSITION (ZFP DEKAL5): From over ZFP VOR/DME on ZFP R-215 and ZBV R-036 to ZBV VORTAC, then on ZBV R-300 to DEKAL. Thence. . . .

NASSAU TRANSITION (ZQA DEKAL5): From over ZQA VOR/DME on ZQA R-315 to CAREY, then on ZBV R-100 to ZBV VORTAC, then on ZBV R-300 to DEKAL. Thence. . . .

URSUS TRANSITION (URSUS DEKAL5): From over URSUS on ZBV R-177 to ZBV VORTAC, then on ZBV R-300 to DEKAL. Thence. . . .

. . . .from over DEKAL expect RADAR vectors to final approach course.

SE-3, 11 OCT 2018 to 08 NOV 2018