

WAAS CH <b>86734</b> <b>W09A</b>	APP CRS <b>093°</b>	Rwy Idg TDZE <b>797</b> Apt Elev <b>808</b>	<b>5648</b>
--	------------------------	---	-------------

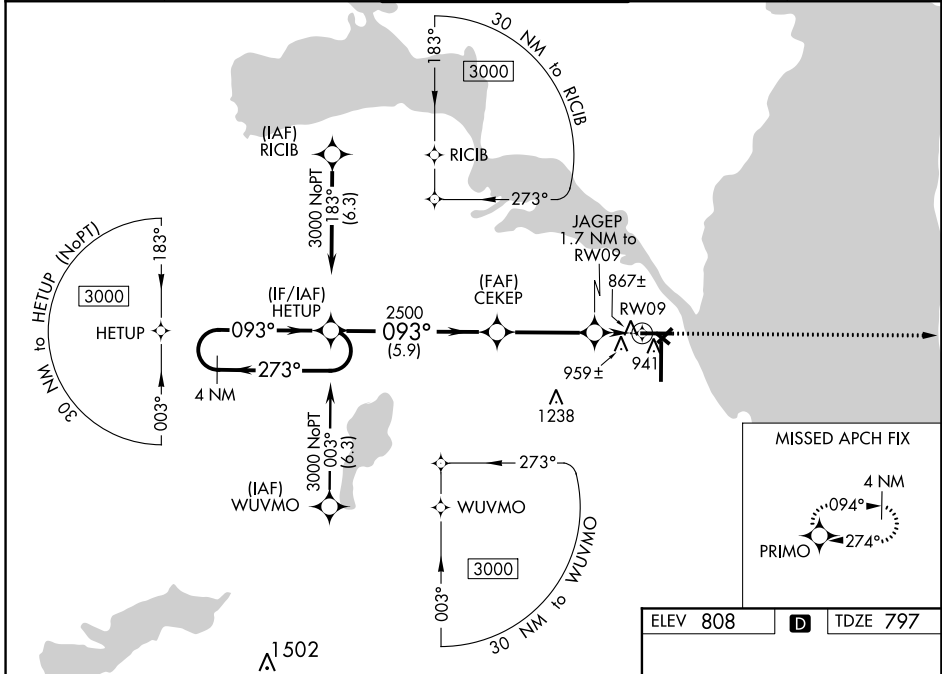
# RNAV (GPS) RWY 9

WITTMAN RGNL (OSH)

**⚠** Circling to Rwy 5, 23, 31 NA at night. For uncompensated Baro-VNAV systems, LNAV/VNAV NA below -20°C (-4°F) or above 54°C (130°F). DME/DME RNP-0.3 NA. VDP and Baro-VNAV NA with using Fond Du Lac County altimeter setting. When local altimeter setting not received, use Fond Du Lac altimeter setting and increase all DA 31 feet and all MDA 40 feet; increase LPV and LNAV/VNAV all Cats visibility and LNAV Cats C/D visibility 1/8 mile, increase Circling Cat D visibility 1/4 mile. Helicopter visibility reduction below 3/4 SM NA.

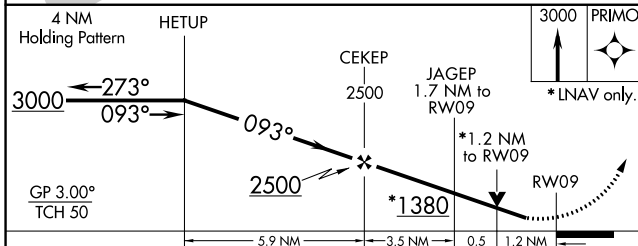
**MISSED APPROACH:**  
Climb to 3000 direct PRIMO and hold.

ATIS <b>125.9</b>	MILWAUKEE APP CON <b>127.0 263.075</b>	OSHKOSH TOWER ★ <b>118.5(CTAF) 290.9</b>	GND CON <b>132.3</b>	UNICOM <b>122.95</b>
----------------------	---	---	-------------------------	-------------------------

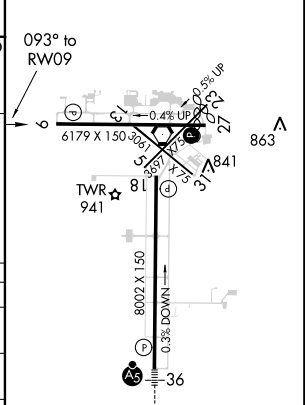


EC-3, 11 OCT 2018 to 08 NOV 2018

EC-3, 11 OCT 2018 to 08 NOV 2018



ELEV 808	<b>D</b>	TDZE 797
----------	----------	----------



CATEGORY	A	B	C	D
LPV DA		1055-3/4	258 (300-3/4)	
LNAV/VNAV DA		1140-1 1/8	343 (400-1 1/8)	
LNAV MDA	1220-1	423 (500-1)	1220-1 1/4	423 (500-1 1/4)
<b>C</b> CIRCLING	1280-1 472 (500-1)	1300-1 492 (500-1)	1360-1 1/2 552 (600-1 1/2)	1440-2 632 (700-2)

REIL Rwy 18 and 27  
HIRL Rwy 9-27, and 18-36