


LOC I-OSH 110.5	APP CRS 004°	Rwy Idg 8002
		TDZE 808
		Apt Elev 808

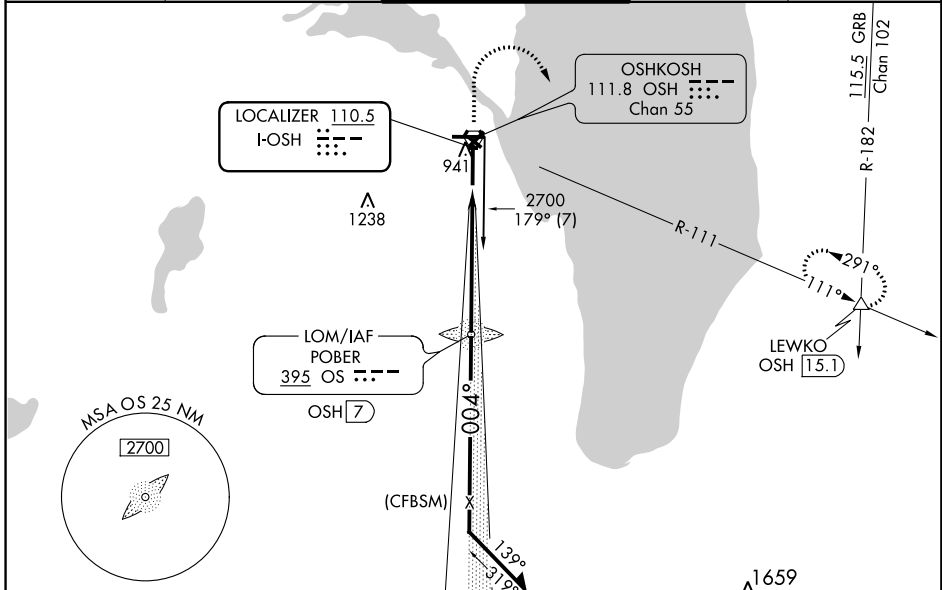
ILS or LOC RWY 36

WITTMAN RGNL (OSH)

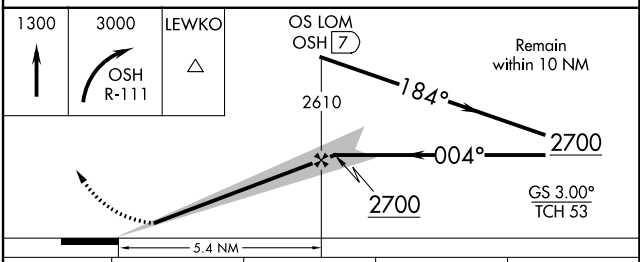
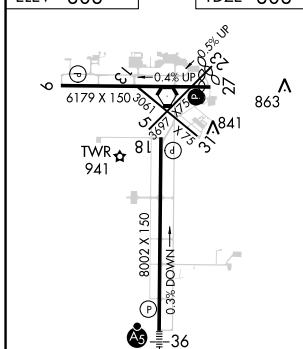
⚠ When local altimeter setting not received, use Fond Du Lac altimeter setting and increase DA 31 feet and all MDA 40 feet; increase S-LOC 36 Cat C/D and Circling Cat C/D visibilities ¼ mile. For inop MALS/R when using Fond Du Lac altimeter setting, increase S-LOC 36 Cat C/D visibility to 1½ mile. Circling to Rwy 5, 23, and 31 NA at night.
 * RVR 1800 authorized with the use of FD or AP or HUD to DA, NA when using Fond Du Lac altimeter setting.

MALS/R

MISSED APPROACH: Climb to 1300 then climbing right turn to 3000 on OSH R-111 to LEWKO INT/OSH 15 DME and hold.

ATIS 125.9	MILWAUKEE APP CON 127.0 263.075	OSHKOSH TOWER ★ 118.5 (CTAF) 290.9	GND CON 132.3	UNICOM 122.95
----------------------	---	--	-------------------------	-------------------------



ELEV 808	TDZE 808
-----------------	-----------------



CATEGORY	A	B	C	D
S-ILS 36 *	1008/24 200 (200-½)			
S-LOC 36	1340/24	532 (600-½)	1340/55	532 (600-1¼)
C CIRCLING	1340-1	532 (600-1)	1360-1½	1440-2
			552 (600-1½)	632 (700-2)

EC-3, 11 OCT 2018 to 08 NOV 2018

EC-3, 11 OCT 2018 to 08 NOV 2018