

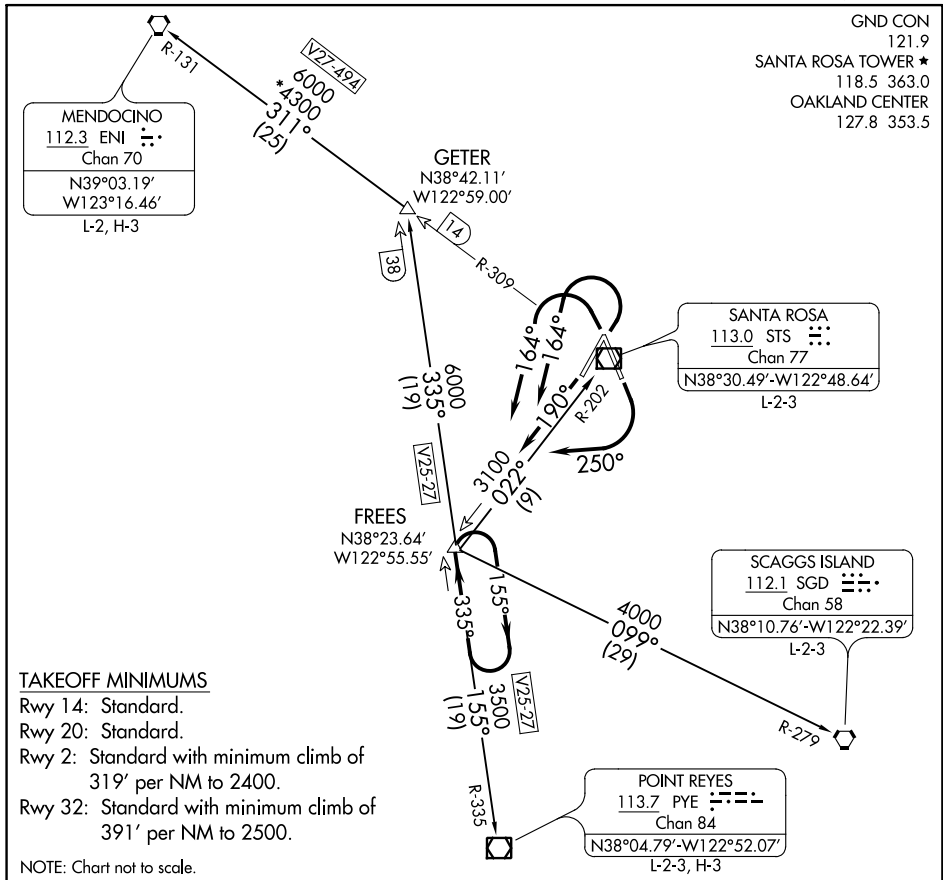
(FREES9.FREES) 17341

FREES NINE DEPARTURE

CHARLES M SCHULZ-SONOMA COUNTY (STS)

AL-696 (FAA)

SANTA ROSA, CALIFORNIA



GND CON
121.9
SANTA ROSA TOWER ★
118.5 363.0
OAKLAND CENTER
127.8 353.5

TAKEOFF MINIMUMS

- Rwy 14: Standard.
- Rwy 20: Standard.
- Rwy 2: Standard with minimum climb of 319' per NM to 2400.
- Rwy 32: Standard with minimum climb of 391' per NM to 2500.

NOTE: Chart not to scale.

DEPARTURE ROUTE DESCRIPTION

TAKEOFF RUNWAYS 2, 32: Climbing left turn heading 164°, thence

TAKEOFF RUNWAY 14: Climbing right turn heading 250°, thence

TAKEOFF RUNWAY 20: Climb on heading 190°, thence

. . . . intercept and climb on STS R-202 to cross FREES INT at or above MEA for route of flight, or continue climb in FREES holding pattern to MEA for route of flight then on (transition).

MENDOCINO TRANSITION (FREES9.ENI): From over FREES INT on PYE R-335 to GETER INT, then on ENI R-131 to ENI VORTAC.

POINT REYES TRANSITION (FREES9.PYE): From over FREES INT on PYE R-335 to PYE VOR/DME.

SANTA ROSA TRANSITION (FREES9.STS): From over FREES INT on STS R-202 to STS VOR/DME.

SCAGGS ISLAND TRANSITION (FREES9.SGD): From over FREES INT on SGD R-279 to SGD VORTAC.

FREES NINE DEPARTURE

(FREES9.FREES) 15SEP16

SANTA ROSA, CALIFORNIA

CHARLES M SCHULZ-SONOMA COUNTY (STS)

SW-2, 11 OCT 2018 to 08 NOV 2018

SW-2, 11 OCT 2018 to 08 NOV 2018