

VORTAC FNT 116.9 Chan 116	APP CRS 359°	Rwy Idg 7648 TDZE 782 Apt Elev 782
---	------------------------	---

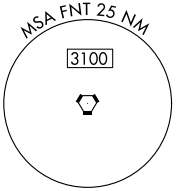
VOR RWY 36

BISHOP INTL (FNT)

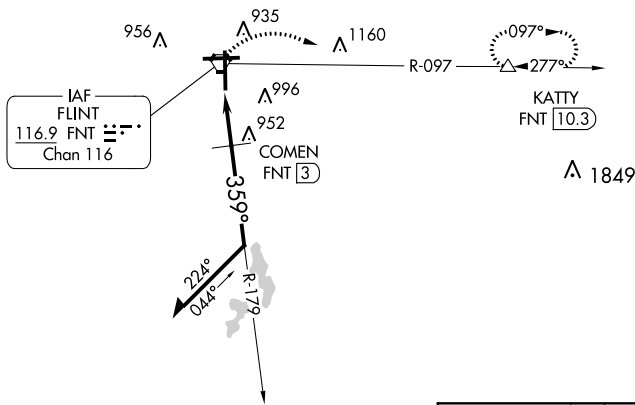
ASR Rwy 36 helicopter visibility reduction below 3/4 SM NA. DME required.

MISSED APPROACH: Climbing right turn to 3000 on FNT VORTAC R-097 to KATTY/10.3 DME and hold.

ATIS 133.15	FLINT APP CON * 118.8 257.9	FLINT TOWER * 126.3(CTAF) 257.9	GND CON 121.9	CLNC DEL 121.75	UNICOM 122.95
-----------------------	---------------------------------------	---	-------------------------	---------------------------	-------------------------

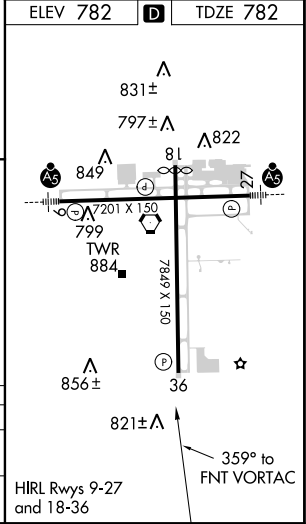
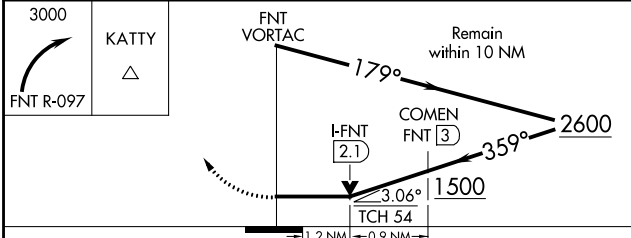


CAUTION: Brightly lighted parking lot 4000' east of approach end Rwy 27 can easily be confused for Rwy 27.



EC-1, 11 OCT 2018 to 08 NOV 2018

EC-1, 11 OCT 2018 to 08 NOV 2018



CATEGORY	A	B	C	D
S-36	1220-1	438 (500-1)	1220-1 1/4	438 (500-1 1/4)
C CIRCLING	1240-1 458 (500-1)	1300-1 518 (600-1)	1300-1 1/2 518 (600-1 1/2)	1520-2 1/4 738 (800-2 1/4)