


LOC I-LG 110.3	APP CRS 015°	Rwy Idg 7012
		TDZE 76
		Apr Elev 80

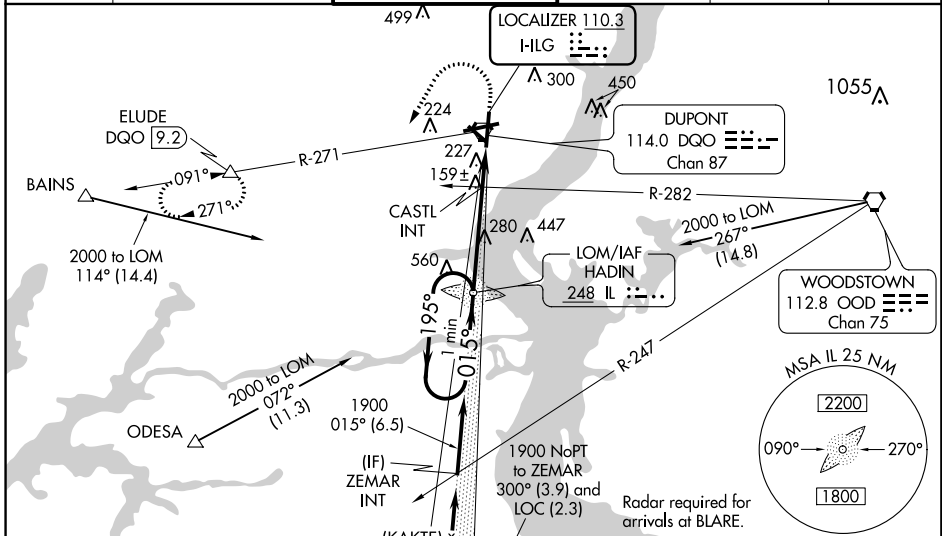
ILS or LOC RWY 1

NEW CASTLE (ILG)

⚠ ADF or DME Required. When local altimeter setting not received, use Philadelphia Intl altimeter setting and increase all DA 54 feet and all MDA 60 feet, and increase S-LOC 1 Cats C and D visibility to RVR 6000; increase Circling Cat C visibility 1/2 mile; increase CASTL fix minimums S-LOC 1 Cats C and D visibility to RVR 4000. For inop MALSR, increase S-LOC 1 Cats C and D visibility to 1 1/2 mile. For inop MALSR when using CASTL fix minimums, increase S-LOC 1 all Cats visibility to RVR 5000. For inop MALSR when using Philadelphia Intl altimeter setting, increase S-LOC 1 Cats C and D visibility to 1 1/2 mile. For CASTL fix minimums, for inop MALSR when using Philadelphia Intl altimeter setting, increase S-LOC 1 Cats C and D visibility to 1 1/2 mile.

MALSR

MISSED APPROACH:
 Climb to 900 then climbing left turn to 2000 on heading 220° and DGO R-271 to ELUDE/DGO 9.2 DME and hold.

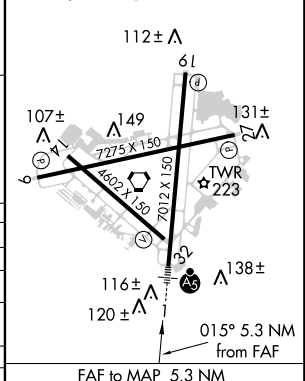
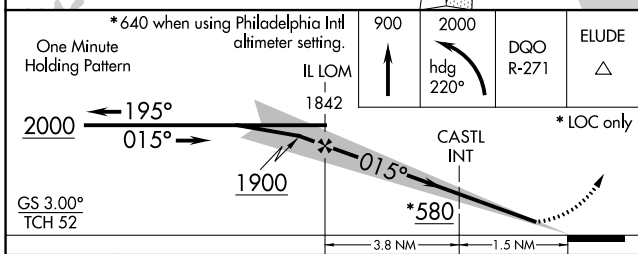
ATIS 123.95	PHILADELPHIA APP CON 118.35 323.1	WILMINGTON TOWER ★ 126.0 (CTAF) 352.05	GND CON 121.7 275.8	CLNC DEL 119.95	UNICOM 122.95
-----------------------	---	--	-------------------------------	---------------------------	-------------------------



Radar required for arrivals at BLARE.

ELEV 80	TDZE 76
---------	---------

REIL Rwy 9, 27 and 19
 HIRL Rwy 9-27 and 1-19
 MIRL Rwy 14-32



CATEGORY	A	B	C	D
S-ILS 1	276/24 200 (200-1/2)			
S-LOC 1	580/24	504 (500-1/2)	580/55	504 (500-1/4)
CIRCLING	580-1	500 (500-1)	600-1 1/2	640-2
			520 (600-1 1/2)	560 (600-2)
CASTL FIX MINIMUMS				
S-LOC 1	420/24	344 (400-1/2)	420/30	344 (400-3/4)
CIRCLING	540-1	460 (500-1)	600-1 1/2	640-2
			520 (600-1 1/2)	560 (600-2)

FAF to MAP 5.3 NM					
Knots	60	90	120	150	180
Min:Sec	5:18	3:32	2:39	2:07	1:46

NE-3, 11 OCT 2018 to 08 NOV 2018

NE-3, 11 OCT 2018 to 08 NOV 2018