

WLACE FOUR ARRIVAL (RNAV)

WEST PALM BEACH, FLORIDA

SE-3, 11 OCT 2018 to 08 NOV 2018

PALM BEACH APP CON
127.35 343.6
PALM BEACH INTL D-ATIS
123.75

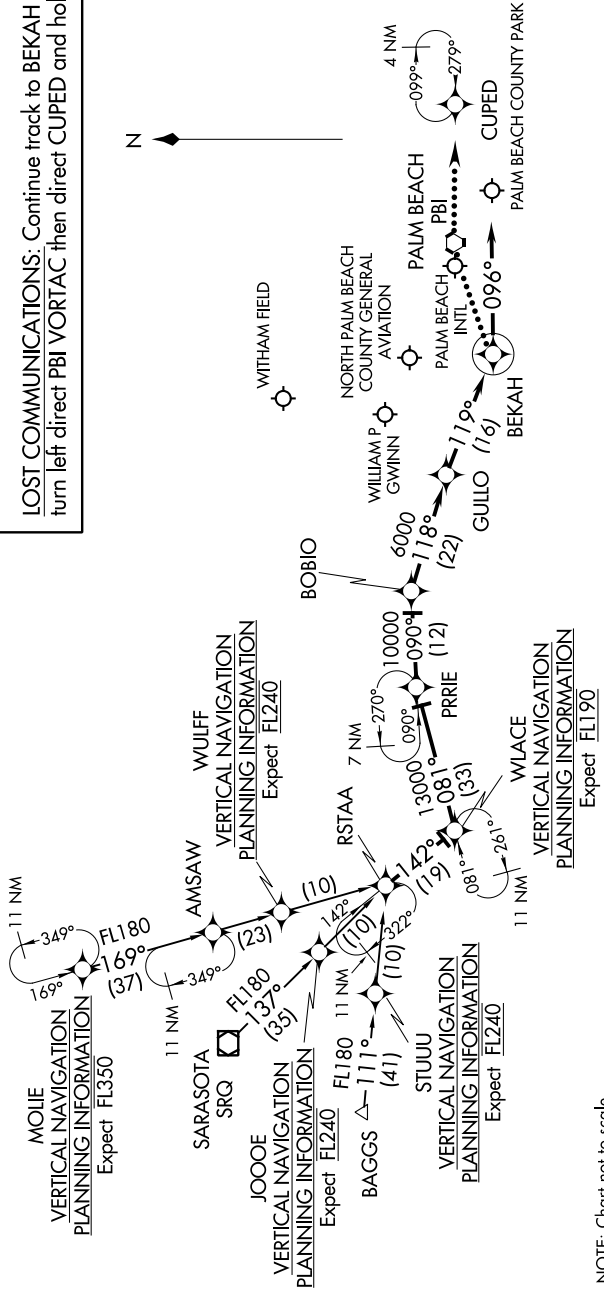
- NOTE: RADAR required.
- NOTE: RNAV 1.
- NOTE: DME/DME/IRU or GPS required.
- NOTE: Turbojet and Turboprop aircraft only.
- NOTE: For non-GPS equipped aircraft, DHP must be operational.
- NOTE: PBI landing east: expect to cross BOBIO at 10000 and 250K.
- NOTE: PBI landing west: expect to cross BOBIO at 10000.

ARRIVAL ROUTE DESCRIPTION

BAGGS TRANSITION (BAGGS.WLACE4)
MOLIE TRANSITION (MOLIE.WLACE4)
SARASOTA TRANSITION (SRQ.WLACE4)

From RSTAA on track 142° to WLACE, then on track 081° to PRRIE, then on track 090° to BOBIO, then on track 118° to GULLO, then on track 119° to BEKAH, then on heading 096° or as assigned by ATC. Expect RADAR vectors to final approach course.

LOST COMMUNICATIONS: Continue track to BEKAH then turn left direct PBI VORTAC then direct CUPED and hold.



WLACE FOUR ARRIVAL (RNAV)

(RSTAA.WLACE4) 13SEP18

WEST PALM BEACH, FLORIDA

NOTE: Chart not to scale.

SE-3, 11 OCT 2018 to 08 NOV 2018