


LOC I-ALW <b>111.7</b>	APP CRS <b>196°</b>	Rwy ldg TDZE Apt Elev <b>6527</b> <b>1194</b> <b>1194</b>
---------------------------	------------------------	--

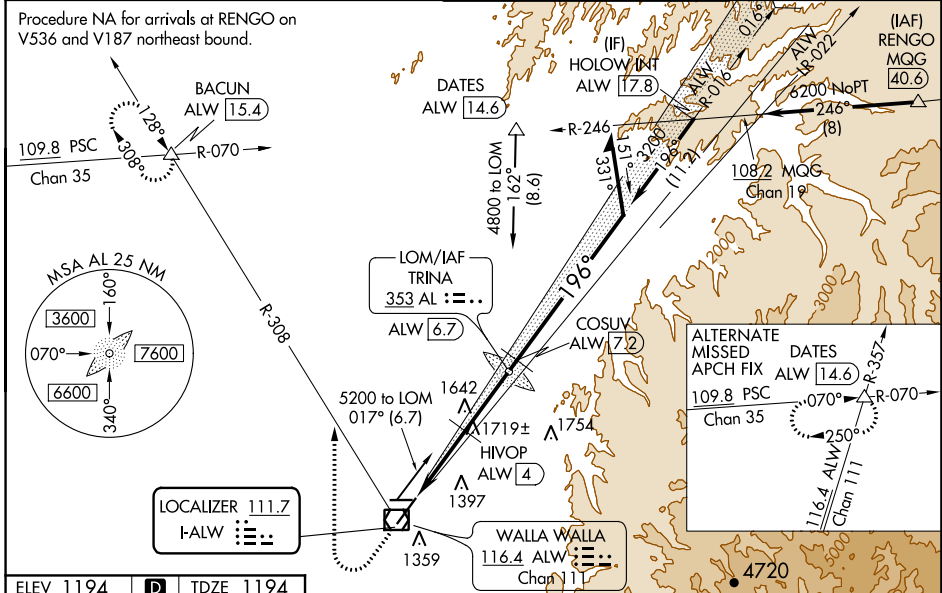
# ILS Y or LOC RWY 20

WALLA WALLA RGNL (ALW)

**▽** VDP NA when using Pendleton altimeter setting. When local altimeter setting not received, use Pendleton altimeter setting and increase all DA and all MDA 120 feet. Increase S-ILS 20 visibility all Cats to RVR 3200, S-LOC 20 Cat A/C/D visibility ½ mile. Increase HIVOP DME FIX S-LOC 20 Cat A/C/D visibility ¼ mile, and Circling Cat A and C visibility ¼ mile. For inoperative MALSRL, when using Pendleton altimeter setting increase S-ILS 20 all Cats visibility to RVR 5500. For inoperative MALSRL increase HIVOP DME FIX minimums S-LOC 20 Cat C/D visibility ¾ mile. Inoperative table does not apply to S-LOC 20 Cat A, C, and D visibility when using Pendleton altimeter setting. # RVR 1800 authorized with use of FD or AP or HUD to DA.

**MALSRL**  
  
 MISSED APPROACH:  
 Climb to 1800 then climbing right turn to 4000 on heading 340° and ALW VOR/DME R-308 to BACUN INT/ALW 15.4 DME and hold.

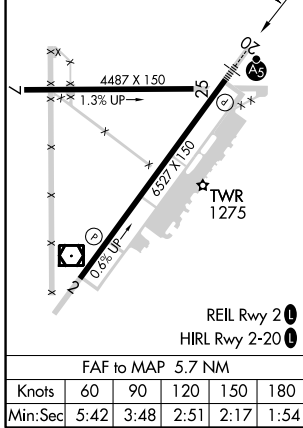
ASOS <b>135.875</b>	CHINOOK APP CON ★ <b>133.15 379.15</b>	WALLA WALLA TOWER ★ <b>118.5 (CTAF) 0 289.4</b>	GND CON <b>121.6 289.4</b>
------------------------	---	--	-------------------------------



NW-1, 11 OCT 2018 to 08 NOV 2018

NW-1, 11 OCT 2018 to 08 NOV 2018

ELEV 1194	<b>D</b>	TDZE 1194
-----------	----------	-----------



1800	4000	ALW R-308	BACUN	TRINA LOM	ALW 6.7	Remain within 10 NM
*2400 when using Pendleton altimeter setting.						
*LOC only.						
ALW 1	*ALW 3.3	ALW 4	HIVOP	ALW 7.2	COSUV	ALW 7.2
2280*	3071	3200	3200	3700	016°	196°
GS 3.00° TCH 50						
-2.3 NM -0.7 -2.7 NM -0.5						

CATEGORY	A	B	C	D
S-ILS 20 #		1394/24	200 (200-½)	
S-LOC 20	2280/40 1086 (1100-¾)	2280/55 1086 (1100-¼)	2280-2½ 1086 (1100-2½)	2300-3 1106 (1200-3)
<b>C</b> CIRCLING	2280-1¼ 1086 (1100-1¼)	2280-1½ 1086 (1100-1½)	2280-3 1086 (1100-3)	2300-3 1106 (1200-3)
HIVOP DME FIX MINIMUMS				
S-LOC 20	1980/24 786 (800-½)	1980/40 786 (800-¾)	1980-1¾ 786 (800-1¾)	2300-3 1106 (1200-3)
<b>C</b> CIRCLING	1980-1 786 (800-1)	1980-1¼ 786 (800-1¼)	2120-2¾ 926 (1000-2¾)	2300-3 1106 (1200-3)