

APP CRS <b>100°</b>	Rwy Idg <b>9003</b>
	TDZE <b>421</b>
	Apt Elev <b>421</b>

# RNAV (RNP) Y RWY 10

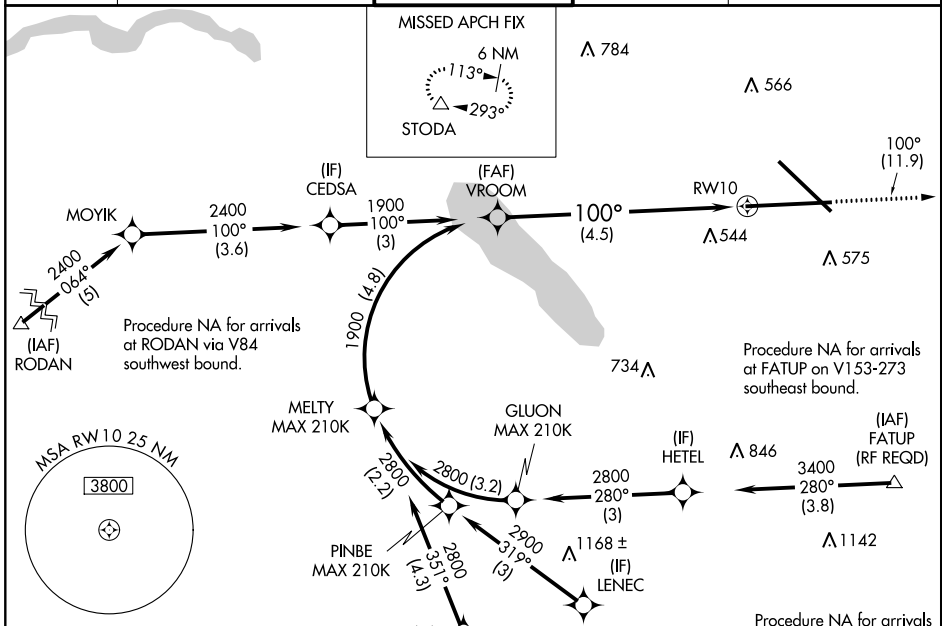
SYRACUSE HANCOCK INTL (SYR)

**⚠** For uncompensated Baro-VNAV systems, procedure NA below -18°C (0°F) or above 54°C (130°F). For inoperative MALS, increase RNP 0.15 all Cats visibility to 1½. For inoperative MALS, increase RNP 0.30 all Cats visibility to 1½. GPS required.



**MISSED APPROACH:**  
Climb to 3000 on track 100° to STODA and hold.

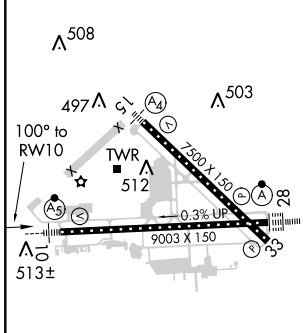
ATIS <b>124.225</b>	SYRACUSE APP CON <b>134.275 279.6</b>	SYRACUSE TOWER <b>120.3 239.0</b>	GND CON <b>121.7 348.6</b>	CLNC DEL <b>125.05 257.775</b>
------------------------	--	--------------------------------------	-------------------------------	-----------------------------------



NE-2: 11 OCT 2018 to 08 NOV 2018

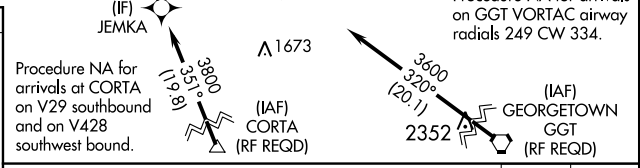
NE-2: 11 OCT 2018 to 08 NOV 2018

ELEV 421	<b>D</b>	TDZE 421
----------	----------	----------



GP 3.00°  
TCH 55

TDZ/CL Rwy 28  
HIRL Rwy 10-28 and 15-33



See planview for multiple IF locations.	3000	STODA
	↑	△
	trk 100°	

CATEGORY	A	B	C	D
RNP 0.15 DA		816/45	395 (400-7%)	
RNP 0.30 DA		881/55	460 (500-1¼)	

**AUTHORIZATION REQUIRED**