


WAAS CH 70310 W13A	APP CRS 131°	Rwy ldg 6565 TDZE 46 Apt Elev 46
--	------------------------	---

RNAV (GPS) RWY 13R

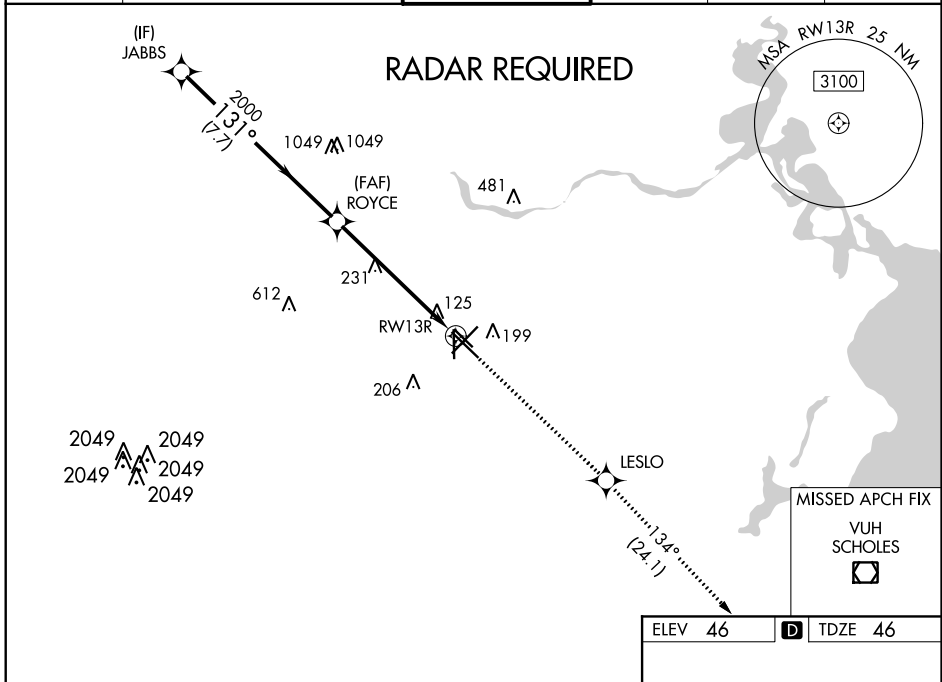
WILLIAM P HOBBY (HOU)

⚠ For uncompensated Baro-VNAV systems, LNAV/VNAV NA below 15°C (5°F) or above 49°C (120°F). DME/DME RNP-0.3 NA. For inop ALS, increase LPV all Cats visibility to RVR 5000; increase LNAV/VNAV Cats A/B/C/D visibility to 1½ SM, Cat E to 1½ SM; and increase LNAV Cats A/B visibility to RVR 5500, Cats C/D to 1½ SM, Cat E to 1¼ SM. Rwy 13R helicopter visibility reduction below ¾ SM NA.

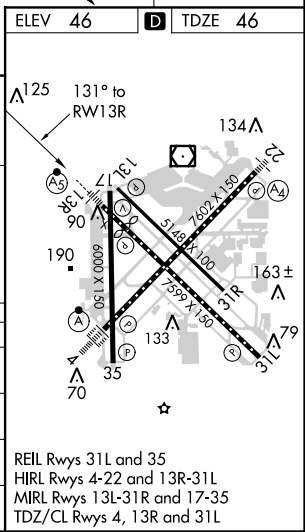
MALSR 

MISSED APPROACH: Climb to 2200 direct LESLO and on track 134° to VUH VOR/DME.

D-ATIS 124.6	HOUSTON APP CON 120.05 379.1 EAST 124.35 316.15 WEST	HOBBY TOWER 118.7 256.9	GND CON 121.9	CLNC DEL 125.45	CPDLC
------------------------	--	-----------------------------------	-------------------------	---------------------------	-------



	JABBS	ROYCE	2200	LESLO	tr 134°	VUH
	2000	2000	↑	⊙	↔	⊠
	GP 3.00° TCH 49		*1.4 NM to RWY 13R		*LNAV only	
	7.7 NM		4.5 NM		1.4 NM	
CATEGORY	A	B	C	D	E	
LPV DA	330/40		284 (300-¾)			
LNAV/VNAV DA	475/50		429 (500-1)			
LNAV MDA	540/40	494 (500-¾)	540/50	494 (500-1)	540/60	494 (500-1¼)
CIRCLING	540-1	494 (500-1)	740-2¼	694 (700-2¼)	860-3	814 (900-3)



SC-5, 11 OCT 2018 to 08 NOV 2018

SC-5, 11 OCT 2018 to 08 NOV 2018