

CRIED NINE DEPARTURE

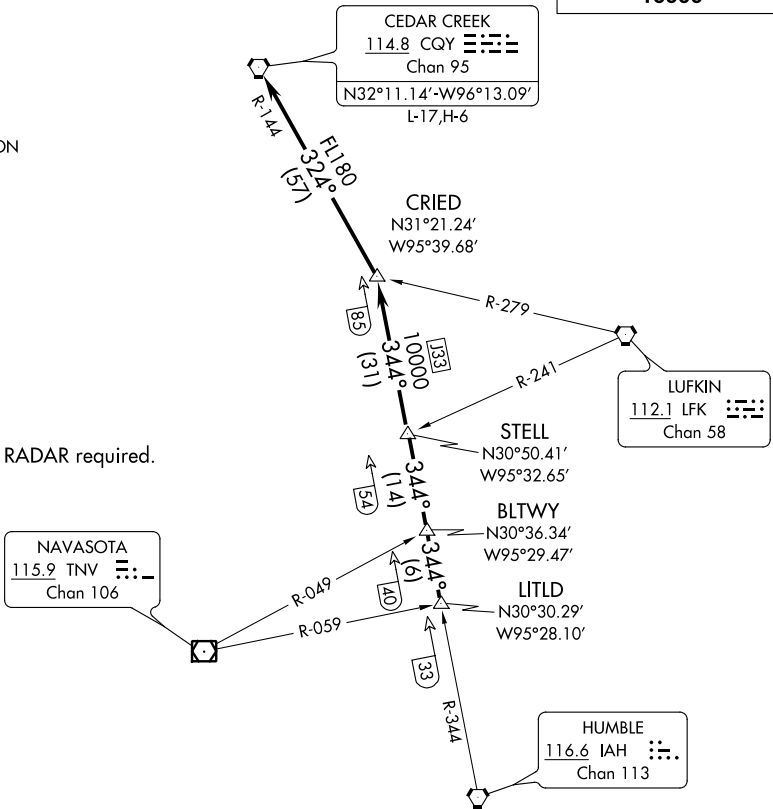
AL-198 (FAA)

WILLIAM P HOBBY (HOU)
HOUSTON, TEXAS

D-ATIS
124.6
CLNC DEL
125.45
CPDLC
GND CON
121.9
HOBBY TOWER
118.7 256.9
HOUSTON DEP CON
132.25 285.425

**TOP ALTITUDE:
16000**

NOTE: RADAR required.



NAVASOTA
115.9 TNV
Chan 106

CEDAR CREEK
114.8 CQY
Chan 95
N32°11.14'-W96°13.09'
L-17,H-6

CRIED
N31°21.24'
W95°39.68'

LUFKIN
112.1 LFK
Chan 58

STELL
N30°50.41'
W95°32.65'

BLTWY
N30°36.34'
W95°29.47'

LITLD
N30°30.29'
W95°28.10'

HUMBLE
116.6 IAH
Chan 113

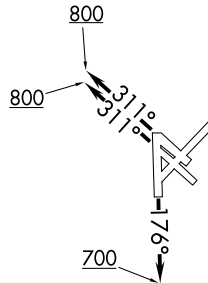
TAKEOFF MINIMUMS

Rwys 13L/R, 31L/R, 35: Standard.

Rwy 4: 300-1 or standard with minimum climb of 270' per NM to 300.

Rwy 17: 300-1.

Rwy 22: Standard with minimum climb of 290' per NM to 1500.



(NARRATIVE ON FOLLOWING PAGE)

NOTE: Chart not to scale.

CRIED NINE DEPARTURE