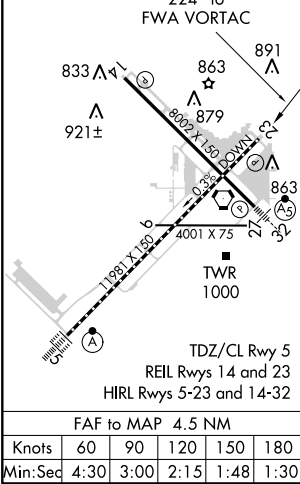
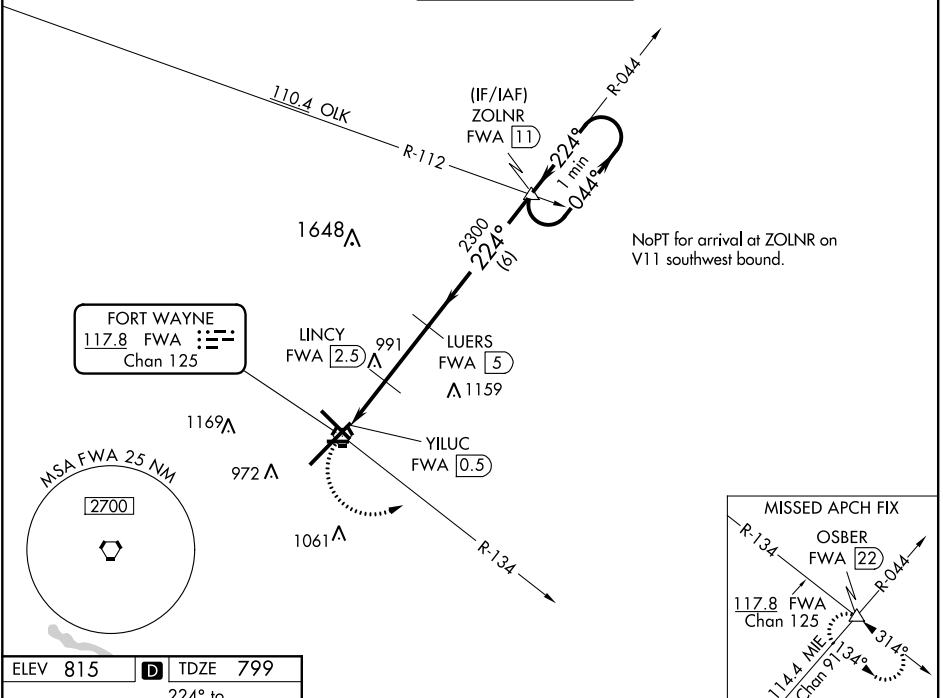


VORTAC FWA <b>117.8</b> Chan 125	APP CRS <b>224°</b>	Rwy Idg TDZE Apt Elev	<b>11981</b> <b>799</b> <b>815</b>
--	------------------------	-----------------------------	--

# VOR or TACAN RWY 23

FORT WAYNE INTL (FWA)

 ASR		MISSED APPROACH: Climbing left turn to 3000 on FWA VORTAC R-134 to OSBER INT/FWA 22 DME and hold.		
ATIS <b>121.25 360.825</b>	FORT WAYNE APP CON <b>127.2 284.6</b>	FORT WAYNE TOWER <b>119.1 269.325</b>	GND CON <b>121.9 348.6</b>	CLNC DEL <b>124.75</b>



CATEGORY	A	B	C	D	E
S-23	1400/55	601 (600-1¼)	1400-1¾	601 (600-1¾)	
CIRCLING	1400-1	585 (600-1)	1420-1¾ 605 (700-1¾)	1520-2¼ 705 (800-2¼)	1520-2½ 705 (800-2½)
LINCYN FIX MINIMUMS					
S-23	1300/55	501 (500-1¼)	1300-1¾	501 (500-1¾)	
CIRCLING	1300-1	485 (500-1)	1420-1¾ 605 (700-1¾)	1520-2¼ 705 (800-2¼)	1520-2½ 705 (800-2½)

EC-2, 11 OCT 2018 to 08 NOV 2018

EC-2, 11 OCT 2018 to 08 NOV 2018