

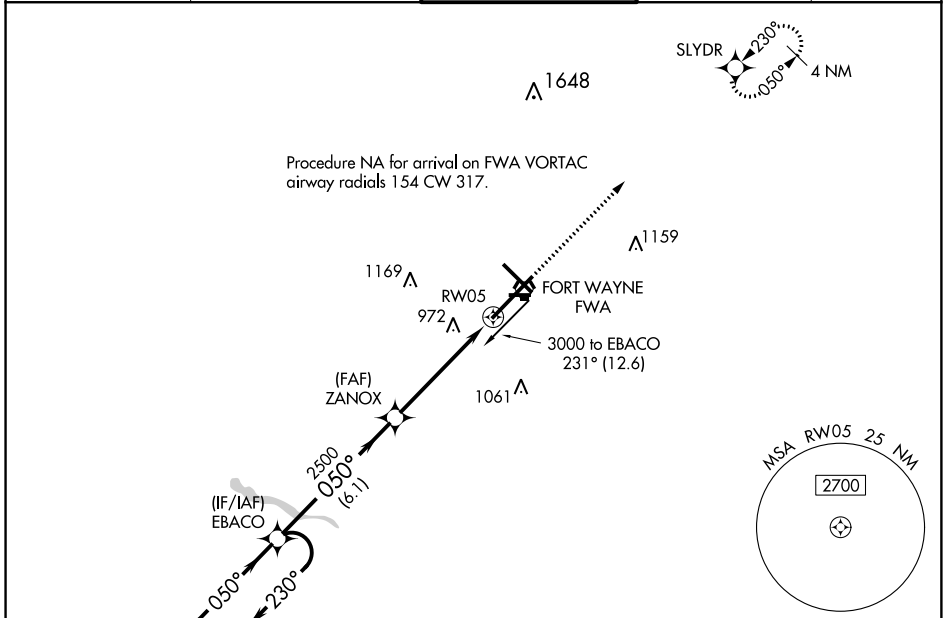
WAAS CH 93609 W05A	APP CRS 050°	Rwy Idg 11981 TDZE 815 Apt Elev 815
--	------------------------	--

RNAV (GPS) RWY 5

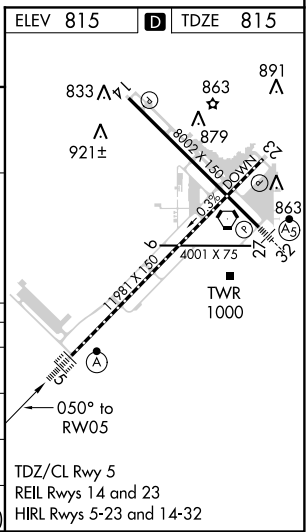
FORT WAYNE INTL (FWA)

<p>For uncompensated Baro-VNAV systems, procedure NA below -16°C (4°F) or above 47°C (116°F). DME/DME RNP-0.3 NA. For inop ALS, increase LPV Cat E visibility to RVR 4000, LNAV/VNAV all Cats visibility to 1½ SM and LNAV Cat C/D/E visibility to 1¾ SM.</p>	<p>ALS-F-2</p>	<p>MISSED APPROACH: Climb to 3000 direct SLYDR and hold.</p>
	<p>ASR</p>	

ATIS 121.25 360.825	FORT WAYNE APP CON 127.2 284.6	FORT WAYNE TOWER 119.1 269.325	GND CON 121.9 348.6	CLNC DEL 124.75
-------------------------------	--	--	-------------------------------	---------------------------



4 NM Holding Pattern		EBACO			ZANOX		RWY05		
3000		230°		050°		2500		* 1.4 NM to RWY05	
GP 3.00°		TCH 55		2500		RWY05		* LNAV only.	
		6.1 NM		3.7 NM		1.4 NM			
CATEGORY	A	B	C	D	E				
LPV DA	1065/18 250 (300-½)								
LNAV/VNAV DA	1275/60 460 (500-1¼)								
LNAV MDA	1300/24	485 (500-½)	1300/50		485 (500-1)				
CIRCLING	1300-1	485 (500-1)	1420-1¾	1520-2¼	1520-2½				
			605 (700-1¾)	705 (800-2¼)	705 (800-2½)				



EC-2, 11 OCT 2018 to 08 NOV 2018

EC-2, 11 OCT 2018 to 08 NOV 2018